

## RFM Series Seismic Zone 4

R. F. Mote now offers a solution for your equipment located in Seismically Active Environments.

Our Seismically Rated Cabinets have been independantly tested and certified to UBC Code Seismic Strength Requirements and are Zone 4 compliant to Telcordia (Bellcore) GR-63-CORE specifications.

Built around our standard R.F. Mote Frames, Seismic Cabinets are available Pre-Configured with our standard Mounting Rails, Cable Managers, Shelves, Power Bars, and Fans. A variety of seismic rated Doors & Side Panels are also available.

To maintain seismic rating requirements, assembled units must be bolted to the floor and all doors are required to incorporate 3 point latching systems which c/w an integrated combination lock with key override. Seismic rated side panels are bolted onto the frame internally. For security purposes, the bolts cannot be removed from outside the cabinet.



### Standard Features Include:

- Heavy gauge steel fully welded construction
- Cabinet Height: 83"
- Various Depths: 30" / 36" / 42"
- Various Widths: 24" / 30"
- All doors are 3-point latching and lift off for ease of equipment and cable installation
- Open base for cable access
- Multiple cable access/fan openings provided in top of cabinet
- Cage nut style Mounting Angles with silkscreened U-markings (also available tapped #10-32)
- 4 grounding points: two top, two bottom

Scan QR Code



for more info!

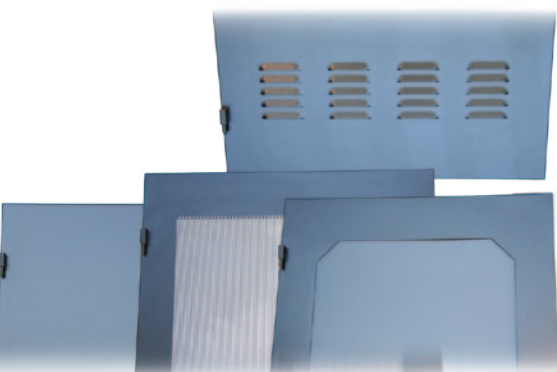


### 30" Series Seismic Cabinet – Kitted

Part number	W	D	H	#of U's
RFM-304283-US-19-S	30.150"	42.150"	83.00"	44U
RFM-303683-US-19-S	30.150"	36.150"	83.00"	44U
RFM-303083-US-19-S	30.150"	30.150"	83.00"	44U
RFM-304283-U-19-S	30.150"	42.150"	83.00"	44U
RFM-303683-U-19-S	30.150"	36.150"	83.00"	44U
RFM-303083-U-19-S	30.150"	30.150"	83.00"	44U

### 24" Series Seismic Cabinet – Kitted

Part number	W	D	H	#of U's
RFM-244283-US-19-S	24.00"	42.150"	83.00"	44U
RFM-243683-US-19-S	24.00"	36.150"	83.00"	44U
RFM-243083-US-19-S	24.00"	30.150"	83.00"	44U
RFM-244283-U-19-S	24.00"	42.150"	83.00"	44U
RFM-243683-U-19-S	24.00"	36.150"	83.00"	44U
RFM-243083-U-19-S	24.00"	30.150"	83.00"	44U



### Optional Features Include:

- Various shelves - cantilever and 4-point mounting
- Several styles of vertical and horizontal cable managers: high density and regular cable management
- Overhead horizontal cable troughs for 24" & 30" wide cabinet
- Various styles of power bars
- Various side panels: solid or perforated
- Several door options: perforated / smoked acrylic / louvered / solid
- 4" Fans and 10" Fans
- 840 CFM cold air distribution unit
- 420 CFM ~ 1680 CFM directional hot air exhaust unit
- Blank Plates
- Airstops
- Gasket kits

