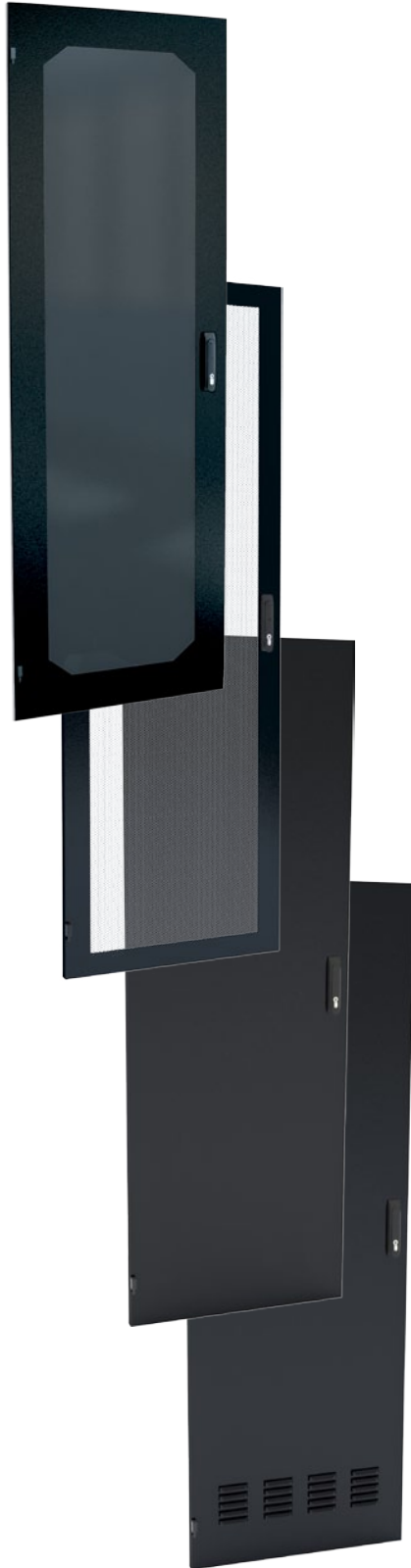


CABINET DOORS: ACRYLIC, PERFORATED, SOLID, & LOUVERED



Smoked acrylic door

Fits...	Part Number	A	B
RFM Series 30" wide cabinet	RFM-3090-1	84.81	26.31
	RFM-3083-1	77.68	26.31
	RFM-3072-1	66.68	26.31
	RFM-3059-1	53.68	26.31
	RFM-3035-1	29.68	26.31
RFM Series 24" wide cabinet	RFM-2490-1	84.68	20.16
	RFM-2483-1	77.68	20.16
	RFM-2472-1	66.68	20.16
	RFM-2459-1	53.68	20.16
	RFM-2435-1	29.68	20.16

Features:

- Heavy gauge steel
- All welded construction
- All cabinet door styles lift off for ease of equipment and cable installation
- Electronic and Combination lock options
- Field reversible; requires hinge kit
- Durable textured powder coated finish
- Standard colour is all black
- Custom colours and sizes available upon request

Highlights:

- Smoked acrylic allows for easy viewing of equipment without opening the door
- Perforated doors provide optimal air flow
- Optional air filter for Louvered doors

(see catalogue page 6.2.7)

Perforated door

Fits...	Part Number	A	B
RFM Series 30" wide cabinet	RFM-3090-1-P	84.81	26.31
	RFM-3083-1-P	77.68	26.31
	RFM-3072-1-P	66.68	26.31
	RFM-3059-1-P	53.68	26.31
	RFM-3035-1-P	29.68	26.31
RFM Series 24" wide cabinet	RFM-2490-1-P	84.68	20.16
	RFM-2483-1-P	77.68	20.16
	RFM-2472-1-P	66.68	20.16
	RFM-2459-1-P	53.68	20.16
	RFM-2435-1-P	29.68	20.16

Note:

- 3-Point locking available (for Seismic installations), add -3P suffix to part # (e.g. RFM-3083-1-P-3P)

Solid door

Fits...	Part Number	A	B
RFM Series 30" wide cabinet	RFM-3090-2	84.81	26.31
	RFM-3083-2	77.68	26.31
	RFM-3072-2	66.68	26.31
	RFM-3059-2	53.68	26.31
	RFM-3035-2	29.68	26.31
RFM Series 24" wide cabinet	RFM-2490-2	84.68	20.16
	RFM-2483-2	77.68	20.16
	RFM-2472-2	66.68	20.16
	RFM-2459-2	53.68	20.16
	RFM-2435-2	29.68	20.16

Louvered door

Fits...	Part Number	A	B
RFM Series 30" wide cabinet	RFM-3090-3	84.81	26.31
	RFM-3083-3	77.68	26.31
	RFM-3072-3	66.68	26.31
	RFM-3059-3	53.68	26.31
	RFM-3035-3	29.68	26.31
RFM Series 24" wide cabinet	RFM-2490-3	84.68	20.16
	RFM-2483-3	77.68	20.16
	RFM-2472-3	66.68	20.16
	RFM-2459-3	53.68	20.16
	RFM-2435-3	29.68	20.16

