

AISLE CONTAINMENT

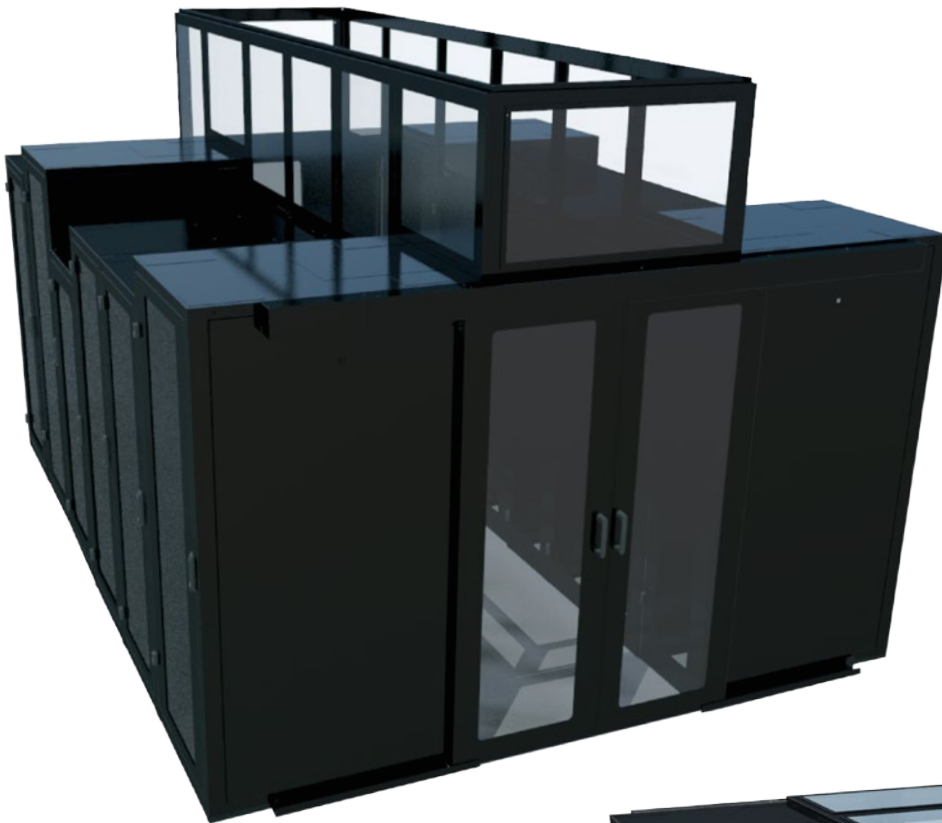
R.F. Mote has a built a reputation for solving complex problems with both standard and customized products. Our Aisle Containment Solutions are designed to personalize virtually any containment strategy. Consult factory for further information regarding your specific application.

Hot Aisle Containment (HAC)

R.F.Mote Hot Aisle Containment (HAC) Solutions - Hot air exhaust from IT equipment is isolated in the hot aisle and directed back to the CRAC/CRAH.

Cold Aisle Containment (CAC)

R.F.Mote Cold Aisle Containment (CAC) Solutions - Targets cooling installed IT equipment instead of the room by isolating the cold air supply and confining it to an enclosed area.



Standard Features:

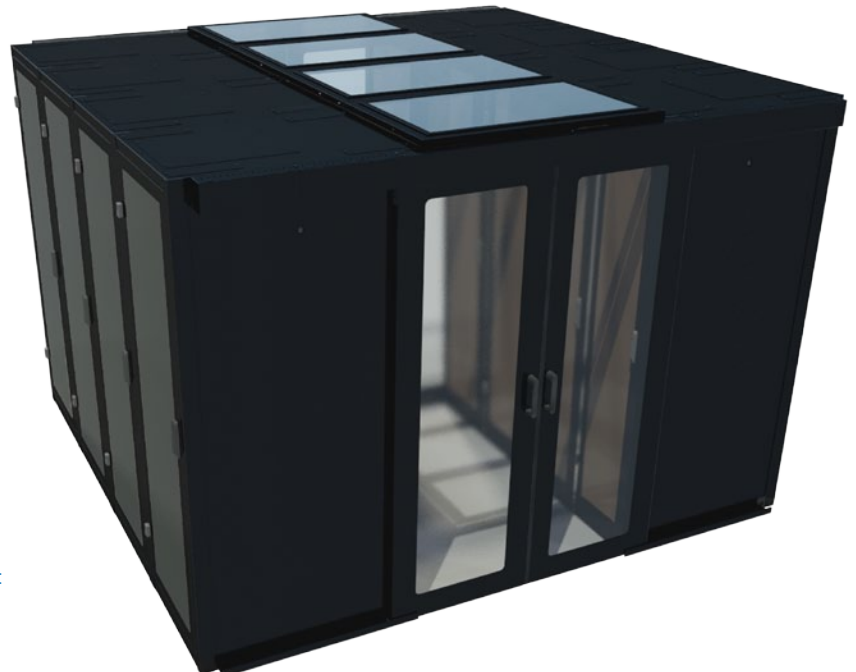
- Contain Hot or Cold aisle
- Prevent air mixing
- Block air escape routes
- Improve efficiency
- Fits ANY RFM Series Cabinets as well as RFM Series Fortress cabinets
- Modular design for future expansion
- Customizable solution for 3rd party cabinets
- Standard colour is textured black powdercoat
- Custom colours (e.g. RAL 7035) also available

Cabinet To Ceiling Panels:

- Available as solid steel panels or
- Available steel frame with clear Lexan¹ inserts
- Containment panels enclose the area above cabinets and span from top of cabinet to ceiling
- Standard colour is textured black powdercoat
- Custom colours (e.g. RAL 7035) also available

End of Row Doors:

- Available Sliding, Dual Sliding, or Swing Door
- Doors are available manual or self closing
- Doors c/w clear Lexan¹ insert
- Standard colour is textured black powdercoat
- Custom colours (e.g. RAL 7035) also available



Over Aisle Ceiling Panels c/w Clear Lexan:

- Contain aisle by enclosing space between cabinet rows
- Over Aisle Ceiling panels may be equipped with exhaust ducts, openings for fire suppression systems, or HVAC
- Available steel frame with clear Lexan¹ inserts
- Standard colour is textured black powdercoat
- Custom colours (e.g. RAL 7035) also available

¹Lexan inserts are UL 94 Fire Rated