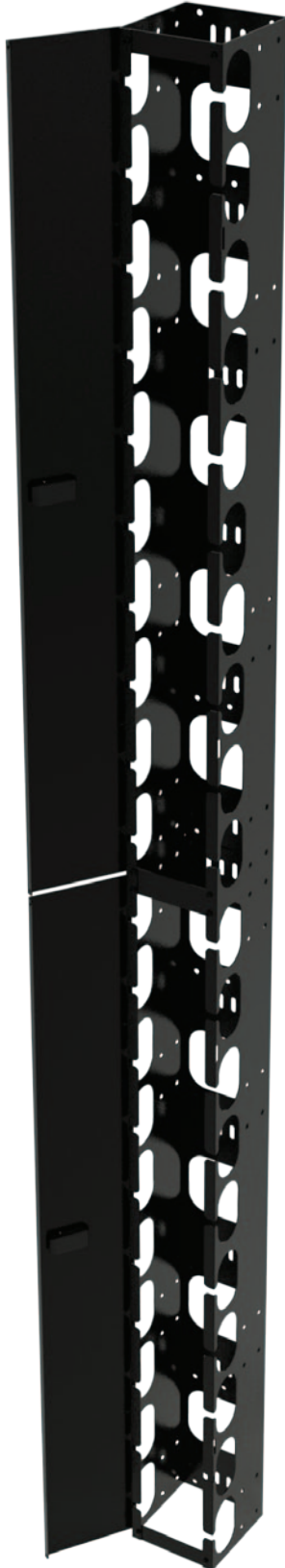


RACK VERTICAL CABLE MANAGERS



Features:

- Heavy gauge steel
- Designed for use with all R.F.Mote Server Racks (see page 4.1.1) and R.F.Mote Wall Mount racks (see page 3.1.3 and 3.1.4)
- 38U, 44U, and 48U ship as 2-Piece body assembly: joins together to form single body
- 18U and 24U ship as Single body assembly with single door

Highlights:

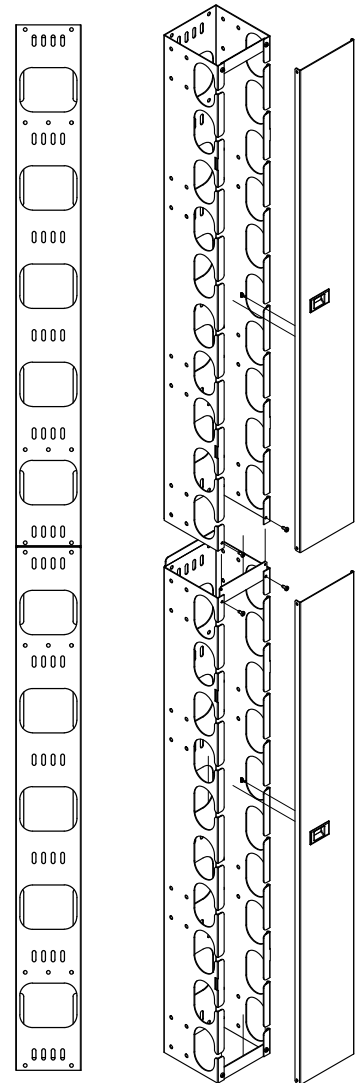
- Slots cut in front portion of the manager allow for easy removal of cables after installation
- Removable cable retainer brackets
- Doors are: easy to remove, latch closed, and reversible
- Durable black textured powder coated finish, additional colours available on request
- D-Rings and Cable Spools may be added to further manage cable bundles inside and outside manager (see page 6.2.1)

Vertical cable manager: 5" and 8" wide, various heights					
Fits our...	Part number	H	W	D	# of U's
44U Racks	RFM-RVCM-B	82.50	5.15	5.43	44U
44U Racks	RFM-RVCMG-B	82.50	8.15	5.43	44U
38U Racks	RFM-RVCM-B-72	72.00	5.15	5.43	38U
38U Racks	RFM-RVCMG-B-72	72.00	8.15	5.43	38U
24U Racks	RFM-RVCM-B-48	48.00	5.15	5.43	24U

Vertical cable manager: 10" and 12" wide, 44U height					
Fits our...	Part number	H	W	D	# of U's
44U Racks	RFM-RVCM-B-10	82.50	10.00	5.43	44U
44U Racks	RFM-RVCM-B-12	82.50	12.00	5.43	44U

Vertical cable manager: 5", 8", and 10" wide, 48U height					
Fits our...	Part number	H	W	D	# of U's
48U Racks	RFM-RVCM5-48	89.50	5.00	5.43	48U
48U Racks	RFM-RVCM8-48	89.50	8.00	5.43	48U
48U Racks	RFM-RVCM10-48	89.50	10.00	5.43	48U

Wall mount rack vertical cable manager, 18U height					
Fits our...	Part number	H	W	D	# of U's
18U Racks (Wall Mount)	RFM-RVCM-B-RWF	35.00	5.15	5.43	18U



Typical view on rear surface

RFM-RVCM series feature 2-piece body assembly (38U, 44U, 48U) and all Door(s) removable and reversible