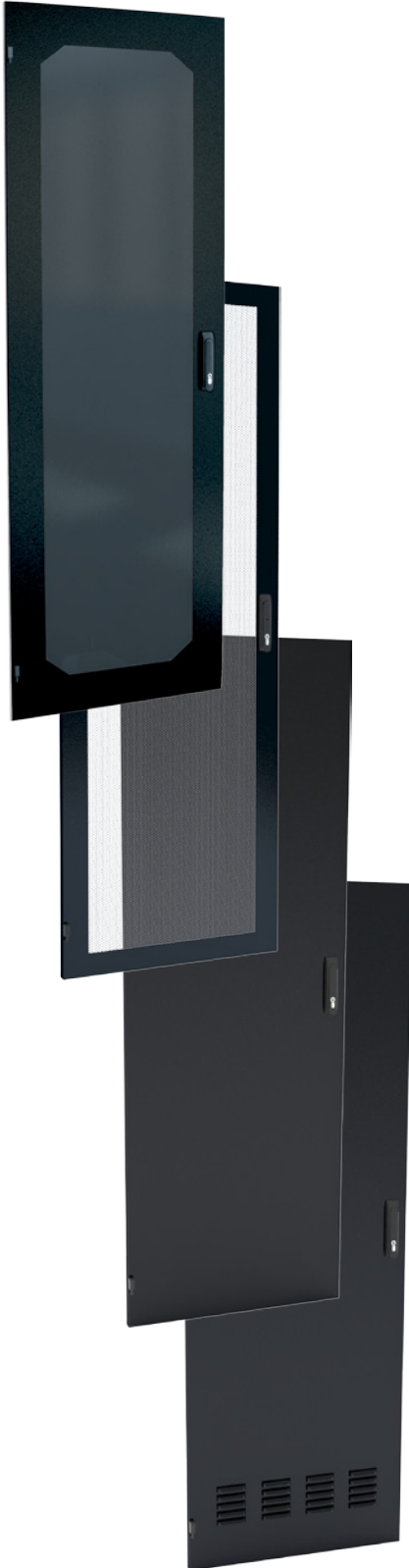


RFM2 - 24" WIDE CABINET DOORS: PERFORATED, ACRYLIC, SOLID, & LOUVERED



LEFT HAND HINGE MOUNT					
PERFORATED	ACRYLIC	SOLID	LOUVERED	HEIGHT	RU's
RFM2-2452-1-P-LH-B	RFM2-2452-1-LH-B	RFM2-2452-2-LH-B	RFM2-2452-3-LH-B	97.00	52U
RFM2-2448-1-P-LH-B	RFM2-2448-1-LH-B	RFM2-2448-2-LH-B	RFM2-2448-3-LH-B	90.00	48U
RFM2-2445-1-P-LH-B	RFM2-2445-1-LH-B	RFM2-2445-2-LH-B	RFM2-2445-3-LH-B	85.00	45U
RFM2-2442-1-P-LH-B	RFM2-2442-1-LH-B	RFM2-2442-2-LH-B	RFM2-2442-3-LH-B	80.00	42U
RFM2-2430-1-P-LH-B	RFM2-2430-1-LH-B	RFM2-2430-2-LH-B	RFM2-2430-3-LH-B	59.00	30U
RFM2-2417-1-P-LH-B	RFM2-2417-1-LH-B	RFM2-2417-2-LH-B	RFM2-2417-3-LH-B	35.00	17U

RIGHT HAND HINGE MOUNT					
PERFORATED	ACRYLIC	SOLID	LOUVERED	HEIGHT	RU's
RFM2-2452-1-P-RH-B	RFM2-2452-1-RH-B	RFM2-2452-2-RH-B	RFM2-2452-3-RH-B	97.00	52U
RFM2-2448-1-P-RH-B	RFM2-2448-1-RH-B	RFM2-2448-2-RH-B	RFM2-2448-3-RH-B	90.00	48U
RFM2-2445-1-P-RH-B	RFM2-2445-1-RH-B	RFM2-2445-2-RH-B	RFM2-2445-3-RH-B	85.00	45U
RFM2-2442-1-P-RH-B	RFM2-2442-1-RH-B	RFM2-2442-2-RH-B	RFM2-2442-3-RH-B	80.00	42U
RFM2-2430-1-P-RH-B	RFM2-2430-1-RH-B	RFM2-2430-2-RH-B	RFM2-2430-3-RH-B	59.00	30U
RFM2-2417-1-P-RH-B	RFM2-2417-1-RH-B	RFM2-2417-2-RH-B	RFM2-2417-3-RH-B	35.00	17U

SPLIT PERFORATED		
PART NUMBER	HEIGHT	RU's
RFM2-2452-1-P-DD-B	97.00	52U
RFM2-2448-1-P-DD-B	90.00	48U
RFM2-2445-1-P-DD-B	85.00	45U
RFM2-2442-1-P-DD-B	80.00	42U
RFM2-2430-1-P-DD-B	59.00	30U
RFM2-2417-1-P-DD-B	35.00	17U

Features:

- Heavy gauge steel
- All welded construction
- All cabinet door styles lift off for ease of equipment and cable installation
- Electronic and Combination lock options
- Available Right hand or Left hand hinge mount
- Durable textured powder coated finish
- Standard colour is all black
- Custom colours and sizes available upon request

Highlights:

- Smoked acrylic inserts¹ allows for easy viewing of equipment without opening the door
- Perforated doors provide optimal air flow
- Optional air filter for Louvered doors

¹ inserts are UL 94 Fire Rated