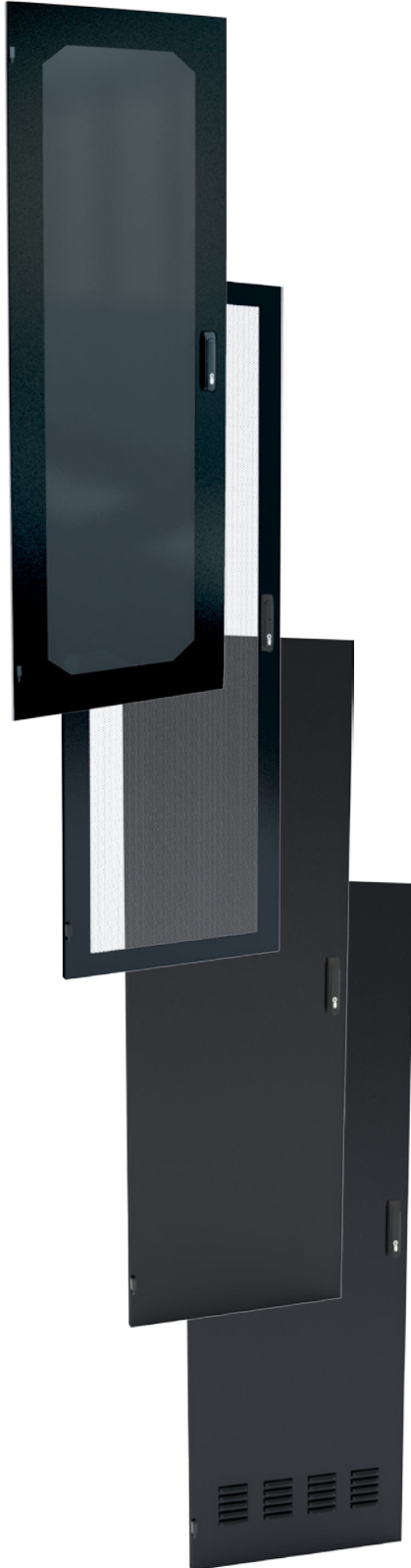


## RFM2 - 30" WIDE CABINET DOORS: PERFORATED, ACRYLIC, SOLID, & LOUVERED



LEFT HAND HINGE MOUNT					
PERFORATED	ACRYLIC	SOLID	LOUVERED	HEIGHT	RU's
RFM2-3052-1-P-LH-B	RFM2-3052-1-LH-B	RFM2-3052-2-LH-B	RFM2-3052-3-LH-B	97.00	52U
RFM2-3048-1-P-LH-B	RFM2-3048-1-LH-B	RFM2-3048-2-LH-B	RFM2-3048-3-LH-B	90.00	48U
RFM2-3045-1-P-LH-B	RFM2-3045-1-LH-B	RFM2-3045-2-LH-B	RFM2-3045-3-LH-B	85.00	45U
RFM2-3042-1-P-LH-B	RFM2-3042-1-LH-B	RFM2-3042-2-LH-B	RFM2-3042-3-LH-B	80.00	42U
RFM2-3030-1-P-LH-B	RFM2-3030-1-LH-B	RFM2-3030-2-LH-B	RFM2-3030-3-LH-B	59.00	30U
RFM2-3017-1-P-LH-B	RFM2-3017-1-LH-B	RFM2-3017-2-LH-B	RFM2-3017-3-LH-B	35.00	17U

RIGHT HAND HINGE MOUNT					
PERFORATED	ACRYLIC	SOLID	LOUVERED	HEIGHT	RU's
RFM2-3052-1-P-RH-B	RFM2-3052-1-RH-B	RFM2-3052-2-RH-B	RFM2-3052-3-RH-B	97.00	52U
RFM2-3048-1-P-RH-B	RFM2-3048-1-RH-B	RFM2-3048-2-RH-B	RFM2-3048-3-RH-B	90.00	48U
RFM2-3045-1-P-RH-B	RFM2-3045-1-RH-B	RFM2-3045-2-RH-B	RFM2-3045-3-RH-B	85.00	45U
RFM2-3042-1-P-RH-B	RFM2-3042-1-RH-B	RFM2-3042-2-RH-B	RFM2-3042-3-RH-B	80.00	42U
RFM2-3030-1-P-RH-B	RFM2-3030-1-RH-B	RFM2-3030-2-RH-B	RFM2-3030-3-RH-B	59.00	30U
RFM2-3017-1-P-RH-B	RFM2-3017-1-RH-B	RFM2-3017-2-RH-B	RFM2-3017-3-RH-B	35.00	17U

SPLIT PERFORATED		
PART NUMBER	HEIGHT	RU's
RFM2-3052-1-P-DD-B	97.00	52U
RFM2-3048-1-P-DD-B	90.00	48U
RFM2-3045-1-P-DD-B	85.00	45U
RFM2-3042-1-P-DD-B	80.00	42U
RFM2-3030-1-P-DD-B	59.00	30U
RFM2-3017-1-P-DD-B	35.00	17U

### Features:

- Heavy gauge steel
- All welded construction
- All cabinet door styles lift off for ease of equipment and cable installation
- Electronic and Combination lock options
- Available Right hand or Left hand hinge mount
- Durable textured powder coated finish
- Standard colour is all black
- Custom colours and sizes available upon request

### Highlights:

- Smoked acrylic inserts<sup>1</sup> allows for easy viewing of equipment without opening the door
- Perforated doors provide optimal air flow
- Optional air filter for Louvered doors

<sup>1</sup> inserts are UL 94 Fire Rated