



## RFM Series 30 Cabinets

R. F. Mote Series 30 Kitted Cabinets include: 2 lockable doors, 2 side panels, mounting rails, levelling feet, top cover plates, and hardware package. Ganging version ships without side panels.



Series 30 Universal Server Cabinet – Kitted

Part number	W	D	H	#of U's
RFM-304890-US-19	30.150"	48.150"	90.00"	48U
RFM-304883-US-19	30.150"	48.150"	83.00"	44U
RFM-304290-US-19	30.150"	42.150"	90.00"	48U
RFM-304283-US-19	30.150"	42.150"	83.00"	44U
RFM-304272-US-19	30.150"	42.150"	72.00"	38U
RFM-304259-US-19	30.150"	42.150"	59.00"	30U
RFM-304235-US-19	30.150"	42.150"	35.00"	17U
RFM-303690-US-19	30.150"	36.150"	90.00"	48U
RFM-303683-US-19	30.150"	36.150"	83.00"	44U
RFM-303672-US-19	30.150"	36.150"	72.00"	38U
RFM-303659-US-19	30.150"	36.150"	59.00"	30U
RFM-303635-US-19	30.150"	36.150"	35.00"	17U
RFM-303090-US-19	30.150"	30.150"	90.00"	48U
RFM-303083-US-19	30.150"	30.150"	83.00"	44U
RFM-303072-US-19	30.150"	30.150"	72.00"	38U
RFM-303059-US-19	30.150"	30.150"	59.00"	30U
RFM-303035-US-19	30.150"	30.150"	35.00"	17U
RFM-302483-US-19	30.150"	24.150"	83.00"	44U

**Standard Features Include:**

- Perforated doors front & rear (lockable, lift off)
- Solid side panels (also available perforated)
- 2 Pair EIA Mounting Rails cage-nut style
- Hardware package (qty 24, cage-nuts & screws)
- Cable access in top and bottom of cabinet
- Heavy gauge steel, fully welded construction
- UL 2416 Listed
- UL Rated for up to 3000 LBS Static Load
- 4 grounding points
- Levelling feet
- Standard colour is textured black powdercoat
- Easy ganging capabilities
- Electronic and Combination lock options available



Series 30 Universal Patching Cabinet – Kitted

Part number	W	D	H	#of U's
RFM-304890-U-19	30.150"	48.150"	90.00"	48U
RFM-304883-U-19	30.150"	48.150"	83.00"	44U
RFM-304290-U-19	30.150"	42.150"	90.00"	48U
RFM-304283-U-19	30.150"	42.150"	83.00"	44U
RFM-304272-U-19	30.150"	42.150"	72.00"	38U
RFM-304259-U-19	30.150"	42.150"	59.00"	30U
RFM-304235-U-19	30.150"	42.150"	35.00"	17U
RFM-303690-U-19	30.150"	36.150"	90.00"	48U
RFM-303683-U-19	30.150"	36.150"	83.00"	44U
RFM-303672-U-19	30.150"	36.150"	72.00"	38U
RFM-303659-U-19	30.150"	36.150"	59.00"	30U
RFM-303635-U-19	30.150"	36.150"	35.00"	17U
RFM-303090-U-19	30.150"	30.150"	90.00"	48U
RFM-303083-U-19	30.150"	30.150"	83.00"	44U
RFM-303072-U-19	30.150"	30.150"	72.00"	38U
RFM-303059-U-19	30.150"	30.150"	59.00"	30U
RFM-303035-U-19	30.150"	30.150"	35.00"	17U
RFM-302483-U-19	30.150"	24.150"	83.00"	44U

**Standard Features Include:**

- Doors are lockable and lift off (Smoked acrylic<sup>1</sup> in front, Louvered in rear)
- Solid side panels (also available perforated)
- 1 Pair EIA Mounting Rails tapped #10-32
- Hardware package (qty 24, #10-32 screws)
- Cable access in top and bottom of cabinet
- Heavy gauge steel, fully welded construction
- UL 2416 Listed
- UL Rated for up to 3000 LBS Static Load
- 4 grounding points
- Levelling feet
- Standard colour is textured black powdercoat
- Easy ganging capabilities
- Electronic and Combination lock options available

<sup>1</sup> Inserts are UL 94 Fire Rated



30" Wide cabinet frame

Part number	W	D	H	#of U's
RFM-304890	30.150"	48.150"	90.00"	48U
RFM-304883	30.150"	48.150"	83.00"	44U
RFM-304290	30.150"	48.150"	90.00"	48U
RFM-304283	30.150"	48.150"	83.00"	44U
RFM-304272	30.150"	42.150"	72.00"	38U
RFM-304259	30.150"	42.150"	59.00"	30U
RFM-304235	30.150"	42.150"	35.00"	17U
RFM-303690	30.150"	36.150"	90.00"	48U
RFM-303683	30.150"	36.150"	83.00"	44U
RFM-303672	30.150"	36.150"	72.00"	38U
RFM-303659	30.150"	36.150"	59.00"	30U
RFM-303635	30.150"	36.150"	35.00"	17U
RFM-303090	30.150"	30.150"	90.00"	48U
RFM-303083	30.150"	30.150"	83.00"	44U
RFM-303072	30.150"	30.150"	72.00"	38U
RFM-303059	30.150"	30.150"	59.00"	30U
RFM-303035	30.150"	30.150"	35.00"	17U
RFM-302483	30.150"	24.150"	83.00"	44U

**Standard Features Include:**

- Heavy gauge steel, fully welded construction
- UL 2416 Listed
- UL Rated for up to 3000 LBS Static Load
- Cable access in top and bottom of cabinet
- Cable and fan access top cover plates
- 4 Grounding points
  - 2 in top (#10-32 x 1/2" stud)
  - 2 in base (1/4-20 x 1/2" stud)
- Levelling feet
- Standard colour is textured black powdercoat
- Easy ganging capabilities
- Custom colours and sizes available

Scan QR Code



for more info!

Scan QR Code



for more info!

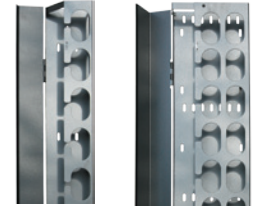
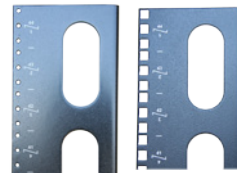
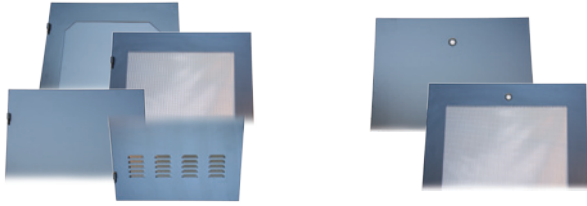
Scan QR Code



for more info!

## RFM Series 30 Cabinets

## Common Options



### Cabinet Doors

Part number	Cab. height	Door type
RFM-3090-1	90"	Smoked acrylic
RFM-3083-1	83"	
RFM-3072-1	72"	
RFM-3059-1	59"	
RFM-3035-1	35"	
RFM-3090-1-PC-78	90"	
RFM-3083-1-PC-78	83"	
RFM-3072-1-PC-78	72"	
RFM-3059-1-PC-78	59"	
RFM-3035-1-PC-78	35"	
RFM-3090-2	90"	Solid
RFM-3083-2	83"	
RFM-3072-2	72"	
RFM-3059-2	59"	
RFM-3035-2	35"	
RFM-3090-3	90"	
RFM-3083-3	83"	
RFM-3072-3	72"	
RFM-3059-3	59"	
RFM-3035-3	35"	

### Cabinet Side Panels

Part number	Cab. height	Cab. depth
RFM-4890-4	90"	48" deep
RFM-4883-4	83"	
RFM-4290-4	90"	42" deep
RFM-4283-4	83"	
RFM-4272-4	72"	
RFM-4259-4	59"	
RFM-4235-4	35"	
RFM-3690-4	90"	
RFM-3683-4	83"	
RFM-3672-4	72"	
RFM-3659-4	59"	
RFM-3635-4	35"	
RFM-3090-4	83"	30" deep
RFM-3083-4	83"	
RFM-3072-4	72"	
RFM-3059-4	59"	
RFM-3035-4	35"	
RFM-2483-4	83"	

For perforated side, add suffix 'P' to part #

### Mounting Rails / Angles

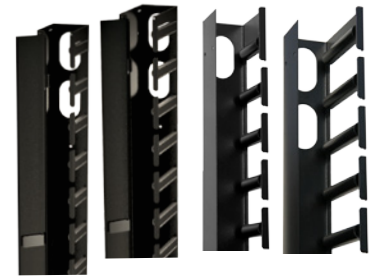
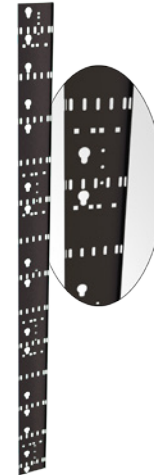
	Part number		Cab. height	# of U's
	Tapped #10-32	Cage-nut style		
19" EIA Mount	RFM-1990-MA	RFM-1990-MA-SQ	90"	48U
	RFM-1983-MA	RFM-1983-MA-SQ	83"	44U
	RFM-1972-MA	RFM-1972-MA-SQ	72"	38U
	RFM-1959-MA	RFM-1959-MA-SQ	59"	30U
	RFM-1935-MA	RFM-1935-MA-SQ	35"	17U
	23" EIA Mount	RFM-2383-MA	RFM-2383-MA-SQ	83"
RFM-2372-MA		RFM-2372-MA-SQ	72"	38U
RFM-2359-MA		RFM-2359-MA-SQ	59"	30U
RFM-2335-MA		RFM-2335-MA-SQ	35"	17U

### VCM : 5", 7", and 8.5" depth

Part number	H	D	W
RFM-583-VCM	76.75"	5.00"	3.50"
RFM-572-VCM	65.75"	5.00"	3.50"
RFM-559-VCM	52.75"	5.00"	3.50"
RFM-535-VCM	28.75"	5.00"	3.50"
RFM-790-VCM-A	84.19"	7.00"	3.50"
RFM-783-VCM-A	76.75"	7.00"	3.50"
RFM-772-VCM-A	65.75"	7.00"	3.50"
RFM-759-VCM-A	52.75"	7.00"	3.50"
RFM-735-VCM-A	28.75"	7.00"	3.50"
RFM-983-VCM-A	76.75"	8.50"	3.50"
RFM-972-VCM-A	65.75"	8.50"	3.50"
RFM-959-VCM-A	52.75"	8.50"	3.50"
RFM-935-VCM-A	28.75"	8.50"	3.50"

### Vertical cable trough

Part number	H	W
RFM-483-VCT	76.88"	4.00"
RFM-472-VCT	65.88"	4.00"
RFM-459-VCT	52.75"	4.00"
RFM-435-VCT	28.75"	4.00"
RFM-583-VCT	76.88"	5.00"
RFM-572-VCT	65.88"	5.00"
RFM-559-VCT	52.75"	5.00"
RFM-535-VCT	28.75"	5.00"
RFM-683-VCT	76.88"	6.00"
RFM-672-VCT	65.88"	6.00"
RFM-659-VCT	52.75"	6.00"
RFM-635-VCT	28.75"	6.00"



### Grounding Bar – Horizontal & Vertical

Part number	Copper Bar
RFM-HGB-19	1" w x 3/16" Thick - Horiz.
RFM-GB-83	1" w x 3/16" Thick - Vert.
RFM-GB-72	1" w x 3/16" Thick - Vert.
RFM-GB-59	1" w x 3/16" Thick - Vert.
RFM-GB-35	1" w x 3/16" Thick - Vert.



### Exhaust Duct

Part number	description
RFM-EXFAN-DUCT	Adjustable Height
RFM-EXFAN-DUCT-8	Square to Round

### Power Bars – Horizontal & Vertical

Part number	Mnt.	Rated
RFM-19-PBH-8	Horz	15A
RFM-19-PBH-18	Horz	15A
RFM-19-PBH-20A	Horz	20A
RFM-19-PBH-20A	Horz	20A
RFM-48-PBV-18	Vert	15A
RFM-62-PBV-24	Vert	15A
RFM-62-PBV-20A-24	Vert	20A



### Fingered VCM, c/w door : 5" and 7" depth

Part Number	H	D	W
RFM-590-VCM-F	83.75"	5.00"	3.50"
RFM-583-VCM-F	77.00"	5.00"	3.50"
RFM-572-VCM-F	65.75"	5.00"	3.50"
RFM-559-VCM-F	52.75"	5.00"	3.50"
RFM-535-VCM-F	29.75"	5.00"	3.50"
RFM-790-VCM-F	83.75"	7.00"	3.50"
RFM-783-VCM-F	76.75"	7.00"	3.50"
RFM-772-VCM-F	65.75"	7.00"	3.50"
RFM-759-VCM-F	52.75"	7.00"	3.50"
RFM-735-VCM-F	29.75"	7.00"	3.50"

### 4" & 10" Exhaust Fan assemblies c/w Mounting Panel(s) for free standing cabinets

Part number	Airflow
RFM-2-FAN-CAB	220 CFM
RFM-4-FAN-CAB	440 CFM
RFM-10-FAN	525 CFM
RFM-10-FAN-2	1050 CFM

### Adj. Mount Depth - Fixed Position

Part number	Shelf depth	Overall adjustable mounting depth	Spacing
RFM-1726-CFS-4	26.00"	6.00" ~ 33.475"	1U
RFM-1719-CFS-4	19.00"	6.00" ~ 26.625"	1U
RFM-1716-CFS-4 (note: non-vented)	16.00"	6.00" ~ 23.625"	1U
RFM-2440-CFS-4		23.75" ~ 45.50"	1U

### Adj. mount depth - Retractable

Part number	Shelf depth	Overall adjustable mounting depth	Spacing
RFM-1726-CRS-4-1U	26.00"	13.00" ~ 33.35"	1U



### Jumper Kit - Grounding Kit

Part number	Cable
RFM-JK-60	6Awg, 60'L
RFM-GRD-KIT	10Awg, 16'L

### Horizontal Cable Trough – Standard & High Density

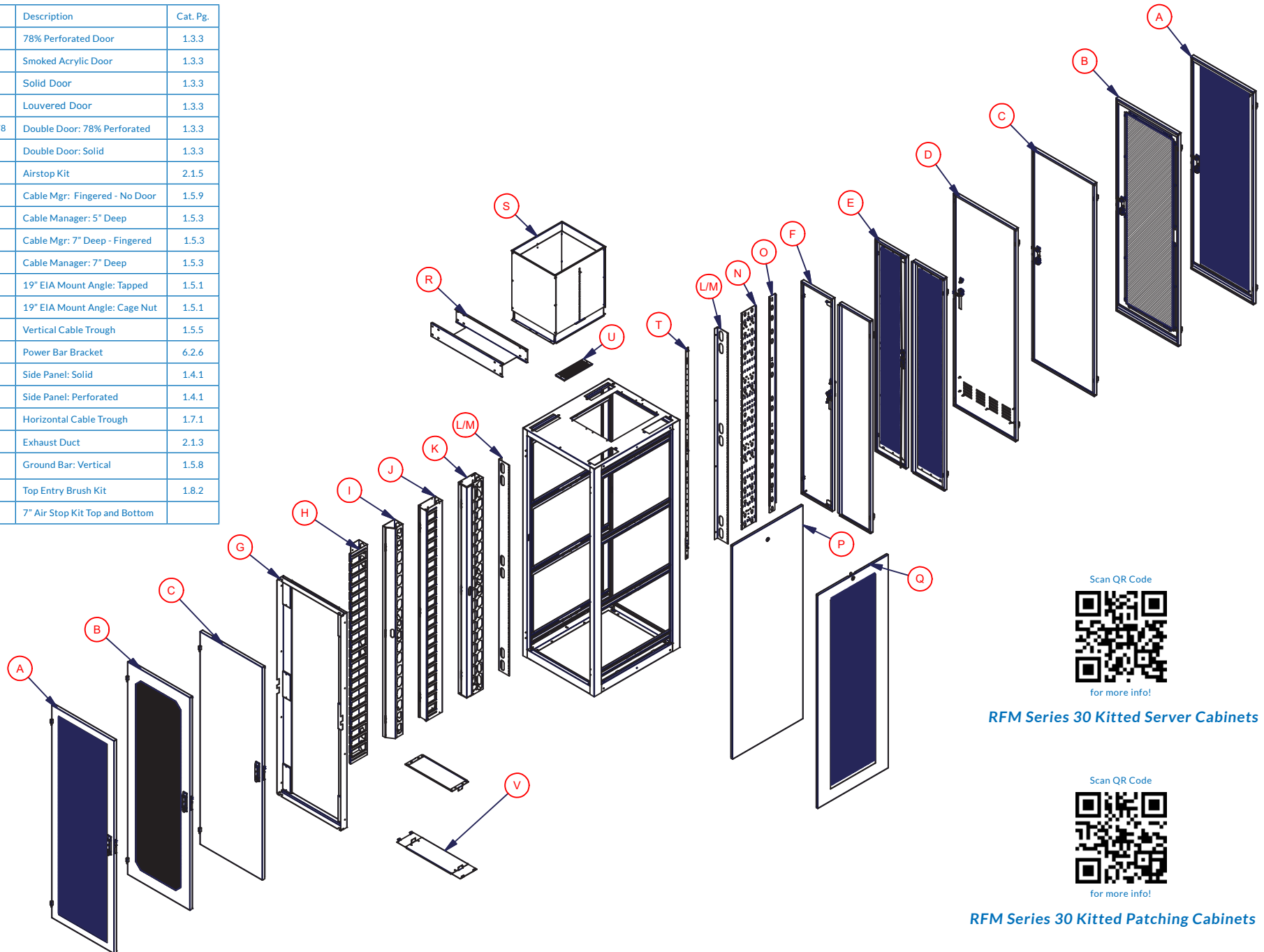
Part number	L	H	W	Part description
RFM-HCT-30	30.00"	4.75"	5.88"	Trough - Standard
RFM-HCT-30-10	30.00"	4.75"	10.75"	Trough - HD
RFM-HCTE-C-5	n/a	4.56"	5.63"	End Cap
RFM-HCTE-C-10	n/a	4.56"	10.63"	HD end cap
RFM-HCT-J-0	1.625"	4.50"	n/a	Joiner for end cap

### Fingered VCM, no door : 5" and 7" depth

Part number	H	D	W
RFM-590-VCM-FND	83.75"	5.00"	3.50"
RFM-583-VCM-FND	76.75"	5.00"	3.50"
RFM-572-VCM-FND	65.75"	5.00"	3.50"
RFM-559-VCM-FND	52.75"	5.00"	3.50"
RFM-535-VCM-FND	29.75"	5.00"	3.50"
RFM-790-VCM-FND	83.75"	7.00"	3.50"
RFM-783-VCM-FND	76.75"	7.00"	3.50"
RFM-772-VCM-FND	65.75"	7.00"	3.50"
RFM-759-VCM-FND	52.75"	7.00"	3.50"
RFM-735-VCM-FND	29.75"	7.00"	3.50"

## RFM Series 30 Cabinet Configurations

Item	Part number	Description	Cat. Pg.
A	RFM-30**-1-PC-78	78% Perforated Door	1.3.3
B	RFM-30**-1	Smoked Acrylic Door	1.3.3
C	RFM-30**-2	Solid Door	1.3.3
D	RFM-30**-3	Louvered Door	1.3.3
E	RFM-30**-1-PC-DD-78	Double Door: 78% Perforated	1.3.3
F	RFM-30**-2-DD	Double Door: Solid	1.3.3
G	RFM-ASK-30**	Airstop Kit	2.1.5
H	RFM-7**-VCM-FND	Cable Mgr: Fingered - No Door	1.5.9
I	RFM-5**-VCM	Cable Manager: 5" Deep	1.5.3
J	RFM-7**-VCM-F	Cable Manager: 7" Deep - Fingered	1.5.3
K	RFM-7**-VCM-A	Cable Manager: 7" Deep	1.5.3
L	RFM-19**-MA	19" EIA Mount Angle: Tapped	1.5.1
M	RFM-19**-MA-SQ	19" EIA Mount Angle: Cage Nut	1.5.1
N	RFM-***-VCT	Vertical Cable Trough	1.5.5
O	RFM-**-PDU-SN	Power Bar Bracket	6.2.6
P	RFM-****-4	Side Panel: Solid	1.4.1
Q	RFM-****-4-P	Side Panel: Perforated	1.4.1
R	RFM-HCT-30**	Horizontal Cable Trough	1.7.1
S	RFM-EXFAN-DUCT	Exhaust Duct	2.1.3
T	RFM-GB-**	Ground Bar: Vertical	1.5.8
U	RFM-TEBK	Top Entry Brush Kit	1.8.2
V	RFM-ASK-7-TB	7" Air Stop Kit Top and Bottom	



Scan QR Code



for more info!

**RFM Series 30 Kitted Server Cabinets**

Scan QR Code



for more info!

**RFM Series 30 Kitted Patching Cabinets**

## RFM Series 24 Cabinets

R. F. Mote Series 24 Kitted Cabinets include: 2 lockable doors, 2 side panels, mounting rails, levelling feet, top cover plates, and hardware package. Ganging version ships without side panels.



Series 24 Universal Server Cabinet – Kitted

Part number	W	D	H	#of U's
RFM-244890-US-19	24.00"	48.150"	90.00"	48U
RFM-244883-US-19	24.00"	48.150"	83.00"	44U
RFM-244290-US-19	24.00"	42.150"	90.00"	48U
RFM-244283-US-19	24.00"	42.150"	83.00"	44U
RFM-244272-US-19	24.00"	42.150"	72.00"	38U
RFM-244259-US-19	24.00"	42.150"	59.00"	30U
RFM-244235-US-19	24.00"	42.150"	35.00"	17U
RFM-243690-US-19	24.00"	36.150"	90.00"	48U
RFM-243683-US-19	24.00"	36.150"	83.00"	44U
RFM-243672-US-19	24.00"	36.150"	72.00"	38U
RFM-243659-US-19	24.00"	36.150"	59.00"	30U
RFM-243635-US-19	24.00"	36.150"	35.00"	17U
RFM-243090-US-19	24.00"	30.150"	90.00"	48U
RFM-243083-US-19	24.00"	30.150"	83.00"	44U
RFM-243072-US-19	24.00"	30.150"	72.00"	38U
RFM-243059-US-19	24.00"	30.150"	59.00"	30U
RFM-243035-US-19	24.00"	30.150"	35.00"	17U
RFM-242483-US-19	24.00"	24.150"	83.00"	44U

**Standard Features Include:**

- Perforated doors front & rear (lockable, lift off)
- Solid side panels (also available perforated)
- 2 Pair EIA Mounting Rails cage-nut style
- Hardware package (qty 24, cage-nuts & screws)
- Cable access in top and bottom of cabinet
- Heavy gauge steel, fully welded construction
- UL 2416 Listed
- UL Rated for up to 3000 LBS Static Load
- 4 grounding points
- Levelling feet
- Standard colour is textured black powdercoat
- Easy ganging capabilities
- Electronic and Combination lock options available



for more info!



Series 24 Universal Patching Cabinet – Kitted

Part number	W	D	H	#of U's
RFM-244890-U-19	24.00"	48.150"	90.00"	48U
RFM-244883-U-19	24.00"	48.150"	83.00"	44U
RFM-244290-U-19	24.00"	42.150"	90.00"	48U
RFM-244283-U-19	24.00"	42.150"	83.00"	44U
RFM-244272-U-19	24.00"	42.150"	72.00"	38U
RFM-244259-U-19	24.00"	42.150"	59.00"	30U
RFM-244235-U-19	24.00"	42.150"	35.00"	17U
RFM-243690-U-19	24.00"	36.150"	90.00"	48U
RFM-243683-U-19	24.00"	36.150"	83.00"	44U
RFM-243672-U-19	24.00"	36.150"	72.00"	38U
RFM-243659-U-19	24.00"	36.150"	59.00"	30U
RFM-243635-U-19	24.00"	36.150"	35.00"	17U
RFM-243090-U-19	24.00"	30.150"	90.00"	48U
RFM-243083-U-19	24.00"	30.150"	83.00"	44U
RFM-243072-U-19	24.00"	30.150"	72.00"	38U
RFM-243059-U-19	24.00"	30.150"	59.00"	30U
RFM-243035-U-19	24.00"	30.150"	35.00"	17U
RFM-242483-U-19	24.00"	24.150"	83.00"	44U

**Standard Features Include:**

- Doors are lockable and lift off (Smoked acrylic<sup>1</sup> in front, Louvered in rear)
- Solid side panels (also available perforated)
- 1 Pair EIA Mounting Rails tapped #10-32
- Hardware package (qty 24, #10-32 screws)
- Cable access in top and bottom of cabinet
- Heavy gauge steel, fully welded construction
- UL 2416 Listed
- UL Rated for up to 3000 LBS Static Load
- 4 grounding points
- Levelling feet
- Standard colour is textured black powdercoat
- Easy ganging capabilities
- Electronic and Combination lock options available

<sup>1</sup> Inserts are UL 94 Fire Rated



for more info!

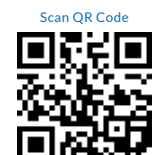


24" Wide cabinet frame

Part Number	W	D	H	# of U's
RFM-244890	24.00	48.150	90.00	48U
RFM-244883	24.00	48.150	83.00	44U
RFM-244290	24.00	42.150	90.00	48U
RFM-244283	24.00	42.150	83.00	44U
RFM-244272	24.00	42.150	72.00	38U
RFM-244259	24.00	42.150	59.00	30U
RFM-244235	24.00	42.150	35.00	17U
RFM-243690	24.00	36.150	90.00	48U
RFM-243683	24.00	36.150	83.00	44U
RFM-243672	24.00	36.150	72.00	38U
RFM-243659	24.00	36.150	59.00	30U
RFM-243635	24.00	36.150	35.00	17U
RFM-243090	24.00	30.150	90.00	48U
RFM-243083	24.00	30.150	83.00	44U
RFM-243072	24.00	30.150	72.00	38U
RFM-243059	24.00	30.150	59.00	30U
RFM-243035	24.00	30.150	35.00	17U
RFM-242483	24.00	24.150	83.00	44U

**Standard Features Include:**

- Heavy gauge steel, fully welded construction
- UL 2416 Listed
- UL Rated for up to 3000 LBS Static Load
- Cable access in top and bottom of cabinet
- Cable and fan access top cover plates
- 4 Grounding points
  - 2 in top (#10-32 x 1/2" stud)
  - 2 in base (1/4-20 x 1/2" stud)
- Levelling feet
- Standard colour is textured black powdercoat
- Easy ganging capabilities
- Custom colours and sizes available

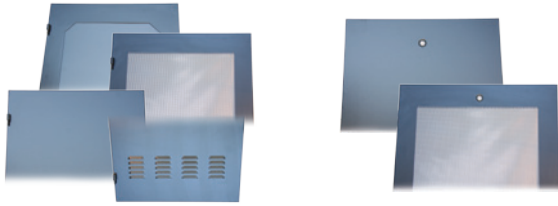


for more info!



## RFM Series 24 Cabinets

## Common Options



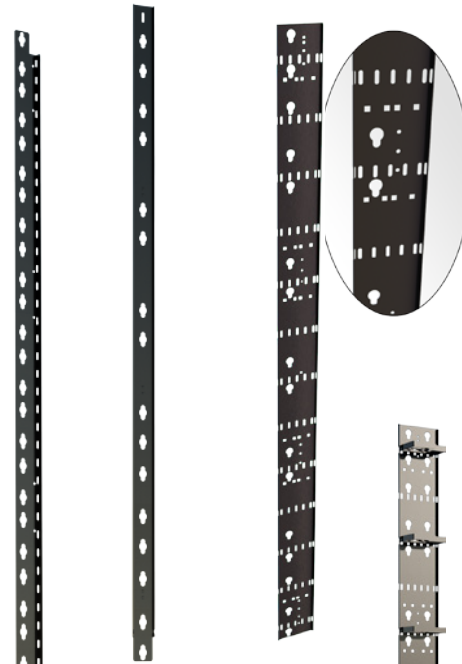
### Cabinet Doors

Part number	Cab. height	Door type
RFM-2490-1	90"	Smoked acrylic
RFM-2483-1	83"	
RFM-2472-1	72"	
RFM-2459-1	59"	
RFM-2435-1	35"	
RFM-2490-1-PC-78	90"	Perforated
RFM-2483-1-PC-78	83"	
RFM-2472-1-PC-78	72"	
RFM-2459-1-PC-78	59"	
RFM-2435-1-PC-78	35"	Solid
RFM-2490-2	90"	
RFM-2483-2	83"	
RFM-2472-2	72"	
RFM-2459-2	59"	
RFM-2435-2	35"	Louvered
RFM-2490-3	90"	
RFM-2483-3	83"	
RFM-2472-3	72"	
RFM-2459-3	59"	
RFM-2435-3	35"	

### Cabinet Side Panels

Part number	Cab. height	Cab. depth
RFM-4890-4	90"	48" deep
RFM-4883-4	83"	
RFM-4290-4	90"	42" deep
RFM-4283-4	83"	
RFM-4272-4	72"	
RFM-4259-4	59"	
RFM-4235-4	35"	
RFM-3690-4	90"	36" deep
RFM-3683-4	83"	
RFM-3672-4	72"	
RFM-3659-4	59"	30" deep
RFM-3635-4	35"	
RFM-3090-4	90"	
RFM-3083-4	83"	24" deep
RFM-3072-4	72"	
RFM-3059-4	59"	
RFM-3035-4	35"	
RFM-2483-4	83"	

For perforated side, add suffix '-P' to part #



### Vertical cable trough

Part number	H	W
RFM-483-VCT	76.88"	4.00"
RFM-472-VCT	65.88"	4.00"
RFM-459-VCT	52.75"	4.00"
RFM-435-VCT	28.75"	4.00"
RFM-583-VCT	76.88"	5.00"
RFM-572-VCT	65.88"	5.00"
RFM-559-VCT	52.75"	5.00"
RFM-535-VCT	28.75"	5.00"
RFM-683-VCT	76.88"	6.00"
RFM-672-VCT	65.88"	6.00"
RFM-659-VCT	52.75"	6.00"
RFM-635-VCT	28.75"	6.00"

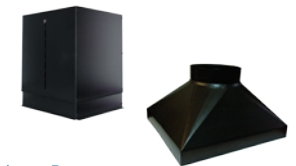
### High Density Vertical Cable Trough

Part number	Part description
RFM-683-VCT-HD	VCT-High Density*
RFM-DR-ADJ	attaches to VCT-HD

\* Fits all RFM Series 83"H Cabinets

### PDU Bracket

Part number	description
RFM-83-PDU-SN	PDU Bracket 79" L
RFM-90-PDU-S	PDU Bracket 85" L



### Grounding Bar – Horizontal & Vertical

Part number	Copper Bar
RFM-HGB-19	1" w x 3/16" Thick - Horiz.
RFM-GB-83	1" w x 3/16" Thick - Vert.
RFM-GB-72	1" w x 3/16" Thick - Vert.
RFM-GB-59	1" w x 3/16" Thick - Vert.
RFM-GB-35	1" w x 3/16" Thick - Vert.



### Power Bars – Horizontal & Vertical

Part number	Mnt.	Rated
RFM-19-PBH-8	Horz	15A
RFM-19-PBHT	Horz	15A
RFM-19-PBH-20A	Horz	20A
RFM-19-PBHT-20A	Horz	20A
RFM-48-PBV-18	Vert	15A
RFM-62-PBV-24	Vert	15A
RFM-62-PBV-20A-24	Vert	20A

### Mounting Rails / Angles

Part number		Cab. height	# of U's
Tapped #10-32	Cage-nut style		
RFM-1990-MA-24	RFM-1990-MA-24-SQ	90"	48U
RFM-1983-MA-24	RFM-1983-MA-24-SQ	83"	44U
RFM-1972-MA-24	RFM-1972-MA-24-SQ	72"	38U
RFM-1959-MA-24	RFM-1959-MA-24-SQ	59"	30U
RFM-1935-MA-24	RFM-1935-MA-24-SQ	35"	17U

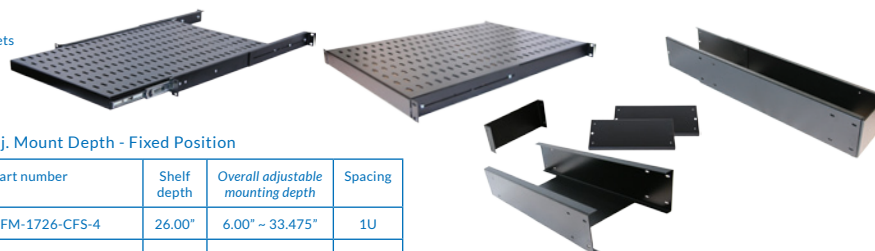
### Exhaust Duct

Part number	description
RFM-EXFAN-DUCT-24	Adjustable Height
RFM-EXFAN-DUCT-8	Square to Round



4" & 10" Exhaust Fan assemblies  
c/w Mounting Panel(s) for free standing cabinets

Part number	Airflow
RFM-2-FAN-CAB	220 CFM
RFM-4-FAN-CAB	440 CFM
RFM-10-FAN	525 CFM
RFM-10-FAN-2	1050 CFM



### Adj. Mount Depth - Fixed Position

Part number	Shelf depth	Overall adjustable mounting depth	Spacing
RFM-1726-CFS-4	26.00"	6.00" ~ 33.475"	1U
RFM-1719-CFS-4	19.00"	6.00" ~ 26.625"	1U
RFM-1716-CFS-4 (note: non-vented)	16.00"	6.00" ~ 23.625"	1U
RFM-2440-CFS-4		23.75" ~ 45.50"	1U

### Horizontal Cable Trough – Standard & High Density

Part number	L	H	W	Part description
RFM-HCT-24	30.00"	4.75"	5.88"	Trough - Standard
RFM-HCT-24-10	30.00"	4.75"	10.75"	Trough - HD
RFM-HCTE-C-5	n/a	4.56"	5.63"	Trough - End Cap
RFM-HCTE-C-10	n/a	4.56"	10.63"	Trough - HD end cap
RFM-HCT-J-0	1.625"	4.50"	n/a	Joiner for end cap

### Horizontal Cable Management

Part number	Spacing
RFM-191D-HCM	1U
RFM-192D-HCM-TD	2U
RFM-194D-HCM-TD	4U
RFM-191D-HCM-D	1U
RFM-192D-HCM-D	2U
RFM-195D-HCM-D	5U
RFM-191D-HCM-F	1U
RFM-192D-HCM-F	2U
RFM-191D-HCM-FD	1U
RFM-192D-HCM-FD	2U
RFM-194D-HCM-FD	4U
RFM-192D-HCM-FHD	2U

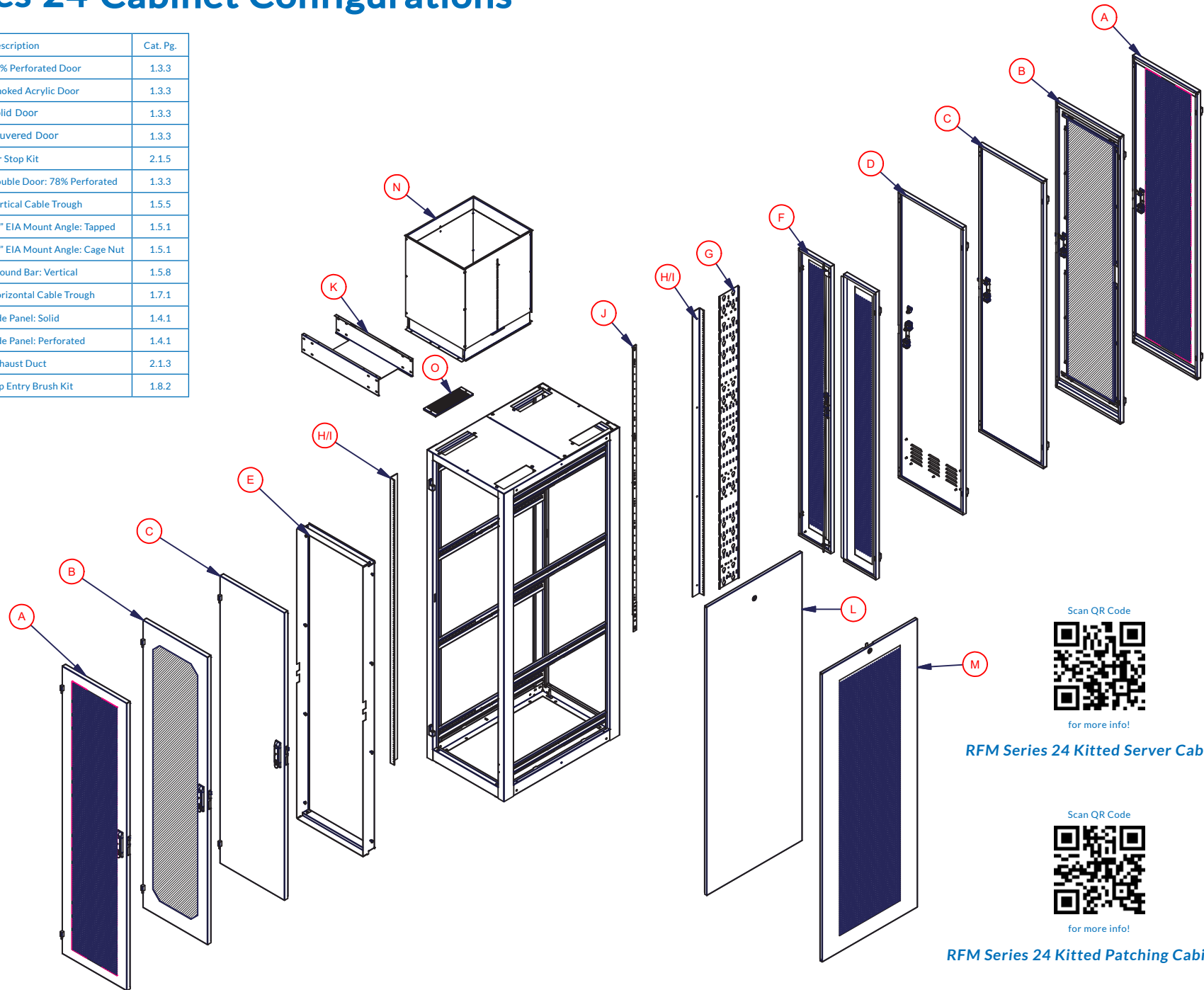


### Jumper Kit - Grounding Kit

Part number	Cable
RFM-JK-60	6Awg, 60'L
RFM-GRD-KIT	10Awg, 16'L

## RFM Series 24 Cabinet Configurations

Item	Part number	Description	Cat. Pg.
A	RFM-24**-1-PC-78	78% Perforated Door	1.3.3
B	RFM-24**-1	Smoked Acrylic Door	1.3.3
C	RFM-24**-2	Solid Door	1.3.3
D	RFM-24**-3	Louvered Door	1.3.3
E	RFM-ASK-24**	Air Stop Kit	2.1.5
F	RFM-24**-1-P-DD-78	Double Door: 78% Perforated	1.3.3
G	RFM-***-VCT	Vertical Cable Trough	1.5.5
H	RFM-19**-MA-24	19" EIA Mount Angle: Tapped	1.5.1
I	RFM-19**-MA-24-SQ	19" EIA Mount Angle: Cage Nut	1.5.1
J	RFM-GB-**	Ground Bar: Vertical	1.5.8
K	RFM-HCT-24-**	Horizontal Cable Trough	1.7.1
L	RFM-****-4	Side Panel: Solid	1.4.1
M	RFM-****-4-P	Side Panel: Perforated	1.4.1
N	RFM-EXFAN-DUCT-24	Exhaust Duct	2.1.3
O	RFM-TEBK	Top Entry Brush Kit	1.8.2



Scan QR Code



for more info!

**RFM Series 24 Kitted Server Cabinets**

Scan QR Code



for more info!

**RFM Series 24 Kitted Patching Cabinets**

## RFM Series High Density Networking Cabinets

R. F. Mote Series High Density Networking Cabinets (36" and 46" wide) include: 2 perforated doors, 2 side panels, 2 pair cage-nut style mounting rails, levelling feet, top cover plates, and hardware package.



### Standard Features Include (36" w & 46" W):

- Lockable perforated front and rear doors
- Doors: Electronic and Combination lock options available
- 2 Solid, lockable, lift off side panels
- 2 Pair mounting rails, standard 19" EIA universal spacing for cage nuts
- Hardware package (24 pcs. x 1/4-20 Cage nuts and screws)
- 4 Grounding points
  - 2 in top (#10-32 x 1/2" stud)
  - 2 in base (1/4-20 x 1/2" stud)
- Top c/w cable access openings (cover plates provided)
- Adjustable levelling feet
- Durable textured powder coated finish
- Standard colour is all black
- Custom colours and sizes available upon request

### Highlights:

- Heavy gauge steel
- All welded construction
- Provisions for fans and cable access
- Cabinet doors are field reversible; hinge kit req'd

### High Density Networking 36" Wide Cabinet – Pre-Configured

Part number	W	D	H	# of U's
RFM-364283-UN-19*	36.150"	42.150"	83.00"	44U
RFM-364290-UN-19*	36.150"	42.150"	90.00"	48U
RFM-364883-UN-19*	36.150"	48.150"	83.00"	44U
RFM-364890-UN-19*	36.150"	48.150"	90.00"	48U

\*36" w HD Cabinet:

- UL 2416 Listed
- UL Rated for up to 3000 LBS Static Load



### High Density Networking 46" Wide Cabinet – Pre-Configured

PART NUMBER	W	D	H	# of U's
RFM-464283-UN-19	46.150"	42.150"	83.00"	44U
RFM-464290-UN-19	46.150"	42.150"	90.00"	48U
RFM-464883-UN-19	46.150"	48.150"	83.00"	44U
RFM-464890-UN-19	46.150"	48.150"	90.00"	48U



### Jumper Kit

Part number	Cable
RFM-JK-60	6Awg, 60"L



### Grounding Kit

Part number	Cable (4 pcs.)
RFM-GRD-KIT	10Awg, 16"L

## Common Options

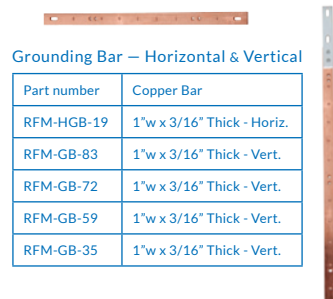


### Cable Management for 36" Wide, High Density Cabinets

Part number	L	D	W
RFM-783-VCM-HD-36	77.00"	7.00"	6.25"
RFM-790-VCM-HD-36	84.25"	7.00"	6.25"

### Cable Management for 46" Wide, High Density Cabinets

Part number	L	D	W
RFM-1083-HDC	77.00"	12.00"	10.00"
RFM-1090-HDC	84.25"	12.00"	10.00"



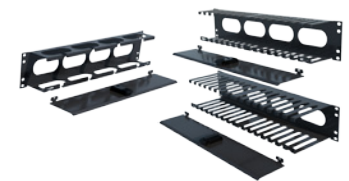
### Grounding Bar – Horizontal & Vertical

Part number	Copper Bar
RFM-HGB-19	1" w x 3/16" Thick - Horiz.
RFM-GB-83	1" w x 3/16" Thick - Vert.
RFM-GB-72	1" w x 3/16" Thick - Vert.
RFM-GB-59	1" w x 3/16" Thick - Vert.
RFM-GB-35	1" w x 3/16" Thick - Vert.



### Power Bars – Horizontal & Vertical

Part number	Mnt.	Rated
RFM-19-PBH-8	Horz	15A
RFM-19-PBHT	Horz	15A
RFM-19-PBH-20A	Horz	20A
RFM-19-PBHT-20A	Horz	20A
RFM-48-PBV-18	Vert	15A
RFM-62-PBV-24	Vert	15A
RFM-62-PBV-20A-24	Vert	20A



### Horizontal Cable Management

Part number	Spacing
RFM-191D-HCM	1U
RFM-192D-HCM-TD	2U
RFM-194D-HCM-TD	4U
RFM-191D-HCM-D	1U
RFM-192D-HCM-D	2U
RFM-195D-HCM-D	5U
RFM-191D-HCM-F	1U
RFM-192D-HCM-F	2U
RFM-191D-HCM-FD	1U
RFM-192D-HCM-FD	2U
RFM-194D-HCM-FD	4U
RFM-192D-HCM-FHD	2U



## RFM Series CoLocation Cabinets

R. F. Mote Series CoLocation Cabinets are available in 2, 3, or 4 compartment configurations. Standard kitted CoLocation cabinets include: perforated doors with combination locking handles, side panels, cage-nut style mounting rails, levelling feet, top cover plates, and hardware package.



Standard RFM-COLO-219

### Standard Features Include:

- Perforated doors front & rear (lift off) w/ Combination locks
- Solid side panels
- 2 Pair EIA Mounting Rails cage-nut style provided for each compartment
- Hardware package provided for each compartment (qty 12: cage-nuts and screws)
- Secure cable management for each compartment
- Cable access in top and bottom of cabinet
- Compartment divider is load bearing
- Heavy gauge steel, fully welded construction
- Load capacity: 2500LBS.
- Depth: 36" or 42"
- Width: 24" or 30"
- 4 grounding points
- Levelling feet
- Standard colour is textured black powdercoat
- Custom colours (e.g. RAL 7035) also available

Scan QR Code



for more info!



3-Compartment CoLocation Cabinet

### CoLocation Cabinet – 24" Width, Kitted, Standard

	Part number	W	D	H	# of U's
2 Compartment	RFM-COLO-219	24.00"	36.150"	83.00"	21U ea
3 Compartment	RFM-COLO-319	24.00"	36.150"	83.00"	13U ea
4 Compartment	RFM-COLO-419	24.00"	36.150"	83.00"	10U ea
2 Compartment	RFM-COLO-219-2442	24.00"	42.150"	83.00"	21U ea
3 Compartment	RFM-COLO-319-2442	24.00"	42.150"	83.00"	13U ea
4 Compartment	RFM-COLO-419-2442	24.00"	42.150"	83.00"	10U ea

### CoLocation Cabinet – 30" Width, Kitted, Standard

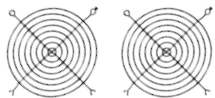
	Part number	W	D	H	# of U's
2 Compartment	RFM-COLO-219-3036	30.00"	36.150"	83.00"	21U ea
3 Compartment	RFM-COLO-319-3036	30.00"	36.150"	83.00"	13U ea
4 Compartment	RFM-COLO-419-3036	30.00"	36.150"	83.00"	10U ea
2 Compartment	RFM-COLO-219-3042	30.00"	42.150"	83.00"	21U ea
3 Compartment	RFM-COLO-319-3042	30.00"	42.150"	83.00"	13U ea
4 Compartment	RFM-COLO-419-3042	30.00"	42.150"	83.00"	10U ea

## Common Options



### Grounding Bar – Horizontal & Vertical

Part number	Copper Bar
RFM-HGB-19	1" w x 3/16" Thick - Horiz.
Consult Factory	1" w x 3/16" Thick - Vert.



### 4" Exhaust Fan assemblies

Part number	Airflow
RFM-COLO-FAN	220 CFM
RFM-FAN-FILTERS	n/a



### Power Bars – Horizontal & Vertical

Part number	Mnt.	Rated
RFM-19-PBH-8	Horz	15A
RFM-19-PBH-8	Horz	15A
RFM-19-PBH-20A	Horz	20A
RFM-19-PBH-20A	Horz	20A

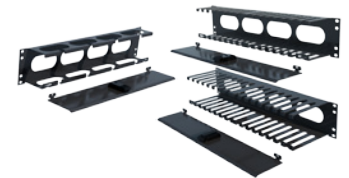


### Adj. Mount Depth - Fixed Position

Part number	Shelf depth	Overall adjustable mounting depth	Spacing
RFM-1726-CFS-4	26.00"	6.00" ~ 33.475"	1U
RFM-1719-CFS-4	19.00"	6.00" ~ 26.625"	1U
RFM-1716-CFS-4 (note: non-vented)	16.00"	6.00" ~ 23.625"	1U
RFM-2440-CFS-4		23.75" ~ 45.50"	1U

### Adj. mount depth - Retractable

Part number	Shelf depth	Overall adjustable mounting depth	Spacing
RFM-1726-CRS-4-1U	26.00"	13.00" ~ 33.35"	1U



### Horizontal Cable Management

Part number	Spacing
RFM-191D-HCM	1U
RFM-192D-HCM-TD	2U
RFM-194D-HCM-TD	4U
RFM-191D-HCM-D	1U
RFM-192D-HCM-D	2U
RFM-195D-HCM-D	5U
RFM-191D-HCM-F	1U
RFM-192D-HCM-F	2U
RFM-191D-HCM-FD	1U
RFM-192D-HCM-FD	2U
RFM-194D-HCM-FD	4U
RFM-192D-HCM-FHD	2U



### Jumper Kit

Part number	Cable
RFM-JK-60	6Awg, 60"L



### Grounding Kit

Part number	Cable (4 pcs.)
RFM-GRD-KIT	10Awg, 16"L

## RFM Series Wall Mount Cabinets

## Common Options



RFM-3022-WM (Wall Mount Cabinet) shown with optional 6" extender

R. F. Mote Series Wall Mount Cabinets standard configuration includes: lockable, smoked acrylic<sup>1</sup> front door and one pair of adjustable 19" EIA mounting rails.

<sup>1</sup> inserts are UL 94 Fire Rated

### Wall Mount Cabinet

Part number	Height	# of U's
RFM-3022-WM-20	22.25"	10U
RFM-3036-WM-20	36.00"	18U
RFM-3048-WM-20	48.00"	25U

Scan QR Code



for more info!



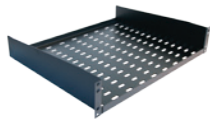
### 6" Cabinet Extender

Part number	Fits with...
RFM-3022-WM-6X	RFM-3022-WM-20
RFM-3036-WM-6X	RFM-3036-WM-20
RFM-3048-WM-6X	RFM-3048-WM-20



### Mounting Rails

Part number	Fits with...
RFM-3022-WM-MA	RFM-3022-WM-20
RFM-3036-WM-MA	RFM-3036-WM-20
RFM-3048-WM-MA	RFM-3048-WM-20



### Shelf - fixed series

100LB capacity

Part number	Depth	Spacing
RFM-1921-RFS	21"	2U
RFM-1915-RFS	15"	2U
RFM-1912-RFS	12"	2U
RFM-1909-RFS	9"	2U



### Shelf - retractable series

100LB capacity

Part number	Depth	Spacing
RFM-1920-RRS	20"	2U



### Folding keyboard tray & mouse pad surface

Part Number	Depth
RFM-FKBA-19	8"



### Vertical Cable Management

Part number	Fits with...
RFM-322-VCM	RFM-3022-WM-20
RFM-336-VCM	RFM-3036-WM-20
RFM-348-VCM	RFM-3048-WM-20

## Additional Options



### Horizontal Grounding Bar

Part number	Copper Bar
RFM-HGB-19	1" W x 3/16" Thick



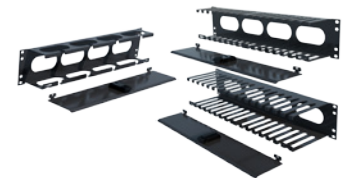
### Horizontal Power Bar

Part number	Rated
RFM-19-PBH-8	15A
RFM-19-PBHT	15A
RFM-19-PBH-20A	20A
RFM-19-PBHT-20A	20A



### Horizontal Cable Manager Zero U

Part number	Depth
RFM-0UHCM-19	3.00"
RFM-0UHCM-19-5	5.00"



### Horizontal Cable Management

Part number	Spacing
RFM-191D-HCM	1U
RFM-192D-HCM-TD	2U
RFM-194D-HCM-TD	4U
RFM-191D-HCM-D	1U
RFM-192D-HCM-D	2U
RFM-195D-HCM-D	5U
RFM-191D-HCM-F	1U
RFM-192D-HCM-F	2U
RFM-191D-HCM-FD	1U
RFM-192D-HCM-FD	2U
RFM-194D-HCM-FD	4U
RFM-192D-HCM-FHD	2U



### 4" Exhaust Fan assemblies

Part number	Airflow
RFM-1-FAN	110 CFM
RFM-2-FAN	220 CFM
RFM-FAN-FILTERS	n/a



### Gasket Kits

Part number	Fits with...
RFM-3022-WM-GASKET	22"H Cab.
RFM-3036-WM-GASKET	36"H Cab.
RFM-3048-WM-GASKET	48"H Cab.



### Jumper Kit

Part number	Cable
RFM-JK-60	6Awg, 60"L



### Grounding Kit

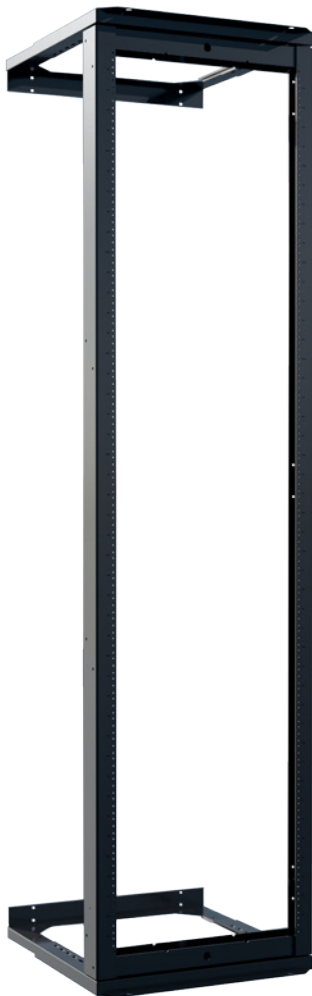
Part number	Cable (4 pcs.)
RFM-GRD-KIT	10Awg, 16"L

## RFM Series Wall Mount Racks & Brackets

### Swing Out Wall Mount Racks

Swing out features allow for easy access to equipment.

R. F. Mote Wall Mount Racks, Brackets, and Low Profile Cabinets are available in various sizes and feature standard 19" EIA Mounting.



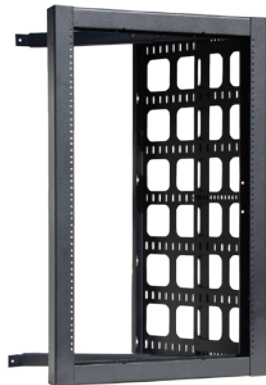
Wall Mount, Adjustable, Swing Out Rack

Part number	# of U's
RFM-1944-RSO-ADJ	44U
RFM-1938-RSO-ADJ	38U

Scan QR Code



for more info!



Wall Mount, Adjustable, Swing Out Rack

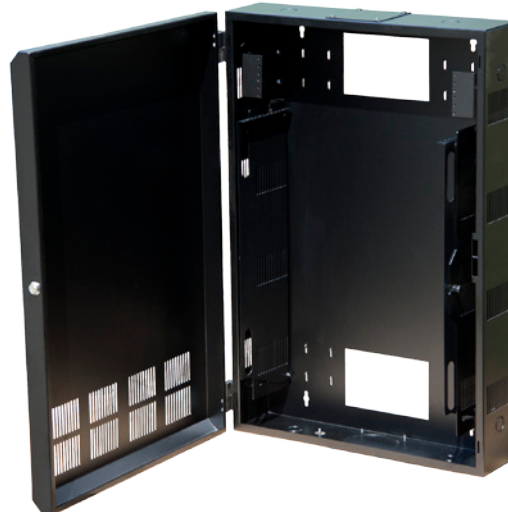
Part number	# of U's
RFM-1918-RWS-ADJ	18U

Scan QR Code



for more info!

### Low Profile Wall Mount Cabinet



Wall Mount Cabinet, Low Profile

Part number	# of U's
RFM-2436-WM-LP-4U	4U
RFM-2436-WM-LP-6U	6U

Scan QR Code



for more info!



2U Patch Panel Mounting Bracket

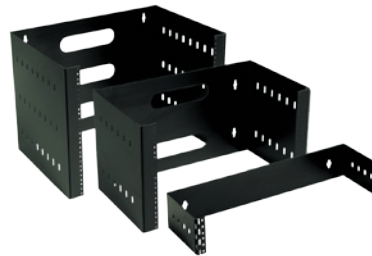
Part number	Fits...
RFM-LP-2U-BRKT	RFM-2436-WM-LP-4U RFM-2436-WM-LP-6U

RFM-2436-WM-LP shown with optional 2U mounting bracket

#### Additional Options:

- 2u patch panel mounting brackets (Provides an additional 2U mounting)
- Fans for thermal management
- Gasket kit

### Wall And Ceiling Mount Brackets



Wall Mount Bracket

	Part number	# of U's
Hinged	RFM-1902-HWMB	2U
Hinged	RFM-1906-HWMB	6U
Hinged	RFM-1909-HWMB	9U
Hinged	RFM-1911-HWMB-22	11U
Non-Hinged	RFM-1904-WMB	4U
Non-Hinged	RFM-1906-WMB	6U
Non-Hinged	RFM-1909-WMB	9U
Non-Hinged	RFM-1911-WMB-22	11U

Ceiling / Wall Mount Bracket

Part number	# of U's
RFM-CMPB-4U-12	4U
RFM-CMPB-4U-7	4U
RFM-CMPB-2U-4	2U

Scan QR Code



for more info!

### Fixed Mount Wall Mount Racks



Wall Mount, Adjustable, Fixed Rack

Part number	# of U's
RFM-1918-RWF-ADJ	18U

Scan QR Code



for more info!

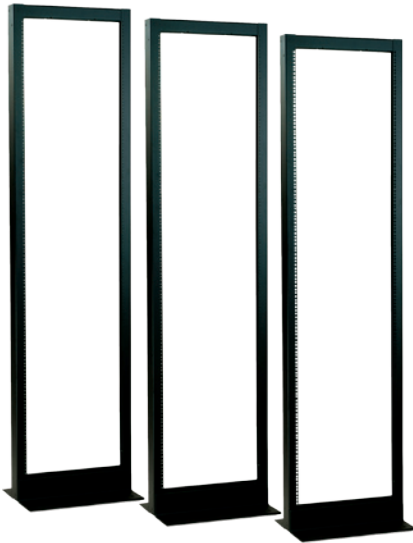
Scan QR Code



for more info!

## RFM Series Racks and Accessories

R. F. Mote Relay Racks are manufactured from 11ga. steel, are fully welded, and units can easily be ganged together, with or without cable managers. Racks are tapped #10-32 to standard EIA spacing; Cage-nut style is also available.



Four Post Rack Bracket Kit

Part number	Adj. Depth
RFM-FPRK	25.50" ~ 42.00"

The assembled unit consists of 2 single racks (RFM-1944-RB) and a bracket kit (RFM-FPRK) which joins the racks together.

Single racks (RFM-1944-RB) are not included, and must be purchased as a separate item.

### Standard Features Include:

- Heavy gauge steel, fully welded construction
- 11 gauge steel frame
- Structural steel floor angles, 5/16" thick, c/w holes to bolt to floor
- Various heights available: 48U / 44U / 38U / 24U
- Stamped 'U' markings
- 19", 23" and 24" mounting available
- Load capacity : 2000 lbs
- c/w 1 integrated ground stud 1/4-20 thread x 3/4" length
- c/w (2x) 0.750" DIA holes in top

### Standard Features Include:

- Four Post Rack Assemblies provide the stability of a cabinet while maintaining the accessibility of an open frame rack
- These units are made up of two R.F. Mote Racks, purchased separately, and an adjustable bracket kit, RFM-FPRK, which joins the racks together.
- The Four Post Rack is depth adjustable from 25<sup>1/2</sup>" to 42" Rail to Rail.

### Tapped #10-32

Part number	H	W	D	Mount	# of U's
RFM-1948-RB	90.00"	21.50"	15.00"	19" EIA	48U
RFM-1944-RB	83.00"	21.50"	15.00"	19" EIA	44U
RFM-1938-RB	72.50"	21.50"	15.00"	19" EIA	38U
RFM-1924-RB	48.00"	21.50"	15.00"	19" EIA	24U
RFM-2348-RB	90.00"	25.50"	15.00"	23" EIA	48U
RFM-2344-RB	83.00"	25.50"	15.00"	23" EIA	44U
RFM-2338-RB	72.50"	25.50"	15.00"	23" EIA	38U
RFM-2324-RB	48.00"	25.50"	15.00"	23" EIA	24U

### Cage nut style

Part number	H	W	D	Mount	# of U's
RFM-1948-RB-SQ	90.00"	21.50"	15.00"	19" EIA	48U
RFM-1944-RB-SQ	83.00"	21.50"	15.00"	19" EIA	44U
RFM-1938-RB-SQ	72.50"	21.50"	15.00"	19" EIA	38U
RFM-1924-RB-SQ	48.00"	21.50"	15.00"	19" EIA	24U

Hardware package included (qty 24 cage-nuts and screws)

### Tapped both sides

Part number	H	W	D	Mount	# of U's
RFM-1948-RB-TBS	90.00"	21.50"	15.00"	19" EIA	48U
RFM-1944-RB-TBS	83.00"	21.50"	15.00"	19" EIA	44U
RFM-2344-RB-TBS	83.00"	25.50"	15.00"	23" EIA	44U

Both front and back of rack tapped #10-32





## RFM Series Racks and Accessories

## Common Options



Rack Vertical cable manager: wide, various heights

Fits with...	Part number	H	W	D
24U Racks	RFM-RVCM-B-48	48.00"	5.15"	5.43"
38U Racks	RFM-RVCM-B-72	72.00"	5.15"	5.43"
44U Racks	RFM-RVCM-B	82.50"	5.15"	5.43"
44U Racks	RFM-RVCMG-B	82.50"	8.15"	5.43"
44U Racks	RFM-RVCM-B-10	82.50"	10.00"	5.43"
44U Racks	RFM-RVCM-B-12	82.50"	12.00"	5.43"
48U Racks	RFM-RVCM8-48	89.50"	8.00"	5.43"
48U Racks	RFM-RVCM10-48	89.50"	10.00"	5.43"

Wall mount rack vertical cable manager, 18U height

Fits with...	Part number	H	W	D
18U Racks (wall mount)	RFM-RVCM-B-RWF	35.00"	5.15"	5.43"



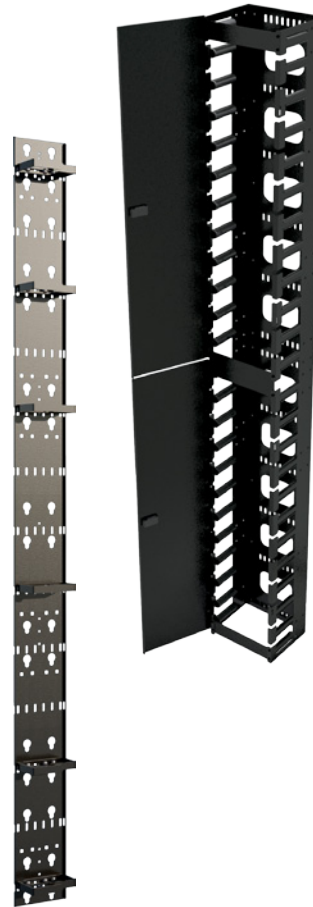
Scan QR Code

for more info!

High Density Vertical Cable Trough

Part number	Part description
RFM-683-VCT-HD	VCT-High Density*
RFM-DR-ADJ	Install on VCT-HD

\* Fits all RFM Series 83"H Cabinets



HIGH DENSITY CABLE MANAGEMENT

RFM-RVCM-HD series: 2U finger spacing

Part number	A	# of U's
RFM-RVCM-HD8-48	8.00	48U
RFM-RVCM-HD10-48	10.00	48U
RFM-RVCM-HD8	8.00	44U
RFM-RVCM-HD10	10.00	44U
RFM-RVCM-HD8-72	8.00	38U
RFM-RVCM-HD10-72	10.00	38U

RFM-RVCM-HD series: 2U finger spacing  
c/w D-Rings on rear of VCM

Part number	A	# of U's
RFM-RVCM-HD8-DR-48	8.00	48U
RFM-RVCM-HD10-DR-48	10.00	48U
RFM-RVCM-HD8-DR	8.00	44U
RFM-RVCM-HD10-DR	10.00	44U
RFM-RVCM-HD8-DR-72	8.00	38U
RFM-RVCM-HD10-DR-72	10.00	38U

RFM-RVCM-HD series: 2U finger spacing  
c/w Double Sided cable management

Part number	A	B	# of U's
RFM-RVCM-HD8-DS-48	8.00	7.00	48U
RFM-RVCM-HD10-DS-48	10.00	9.00	48U
RFM-RVCM-HD8-DS	8.00	7.00	44U
RFM-RVCM-HD10-DS	10.00	9.00	44U
RFM-RVCM-HD8-DS-72	8.00	7.00	38U
RFM-RVCM-HD10-DS-72	10.00	9.00	38U

RFM-RVCM-HD series: End Panel  
for Double Sided cable manager

Part number	Fits Double Sided RVCM...
RFM-RVCM-HD-48-EP	RFM-RVCM-HDxx-DS-48
RFM-RVCM-HD-EP	RFM-RVCM-HDxx-DS
RFM-RVCM-HD-72-EP	RFM-RVCM-HD-xx-DS-72



Adj. Mount Depth – Fixed Position  
(Use with Four-Post Rack)

Part number	Shelf depth	Overall adjustable mounting depth	Spacing
RFM-1726-CFS-4	26.00"	6.00" ~ 33.475"	1U
RFM-1719-CFS-4	19.00"	6.00" ~ 26.625"	1U
RFM-1716-CFS-4 (note: non-vented)	16.00"	6.00" ~ 23.625"	1U
RFM-2440-CFS-4		23.75" ~ 45.50"	1U

Adj. mount depth - Retractable

Part number	Shelf depth	Overall adjustable mounting depth	Spacing
RFM-1726-CRS-4-1U	26.00"	13.00" ~ 33.35"	1U

## Additional Options



Horizontal Cable Management

Part number	Spacing
RFM-191D-HCM	1U
RFM-192D-HCM-TD	2U
RFM-194D-HCM-TD	4U
RFM-191D-HCM-D	1U
RFM-192D-HCM-D	2U
RFM-195D-HCM-D	5U
RFM-191D-HCM-F	1U
RFM-192D-HCM-F	2U
RFM-191D-HCM-FD	1U
RFM-192D-HCM-FD	2U
RFM-194D-HCM-FD	4U
RFM-192D-HCM-FHD	2U

Grounding Bar – Horizontal & Vertical

Part number	Copper Bar
RFM-HGB-19	1" w x 3/16" Thick - Horiz.
RFM-GB-83	1" w x 3/16" Thick - Vert.
RFM-GB-72	1" w x 3/16" Thick - Vert.
RFM-GB-59	1" w x 3/16" Thick - Vert.
RFM-GB-35	1" w x 3/16" Thick - Vert.

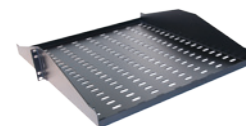


Power Bars – Horizontal & Vertical

Part number	Mnt.	Rated
RFM-19-PBH-8	Horz	15A
RFM-19-PBH-T	Horz	15A
RFM-19-PBH-20A	Horz	20A
RFM-19-PBH-T-20A	Horz	20A
RFM-48-PBV-18	Vert	15A
RFM-62-PBV-24	Vert	15A
RFM-62-PBV-20A-24	Vert	20A

Shelf – fixed series  
100LB capacity

Part number	Depth	Spacing
RFM-1921-RFS	21"	2U
RFM-1915-RFS	15"	2U
RFM-1912-RFS	12"	2U
RFM-1909-RFS	9"	2U



Part number	Depth	Spacing
RFM-1920-DRFS	20"	2U
RFM-1928-DRFS	28"	2U



Shelf – retractable series  
100LB capacity

Part number	Depth	Spacing
RFM-1920-RRS	20"	2U



Jumper Kit - Grounding Kit

Part number	Cable
RFM-JK-60	6Awg, 60'L
RFM-GRD-KIT	10Awg, 16'L



## Cage Wall Systems

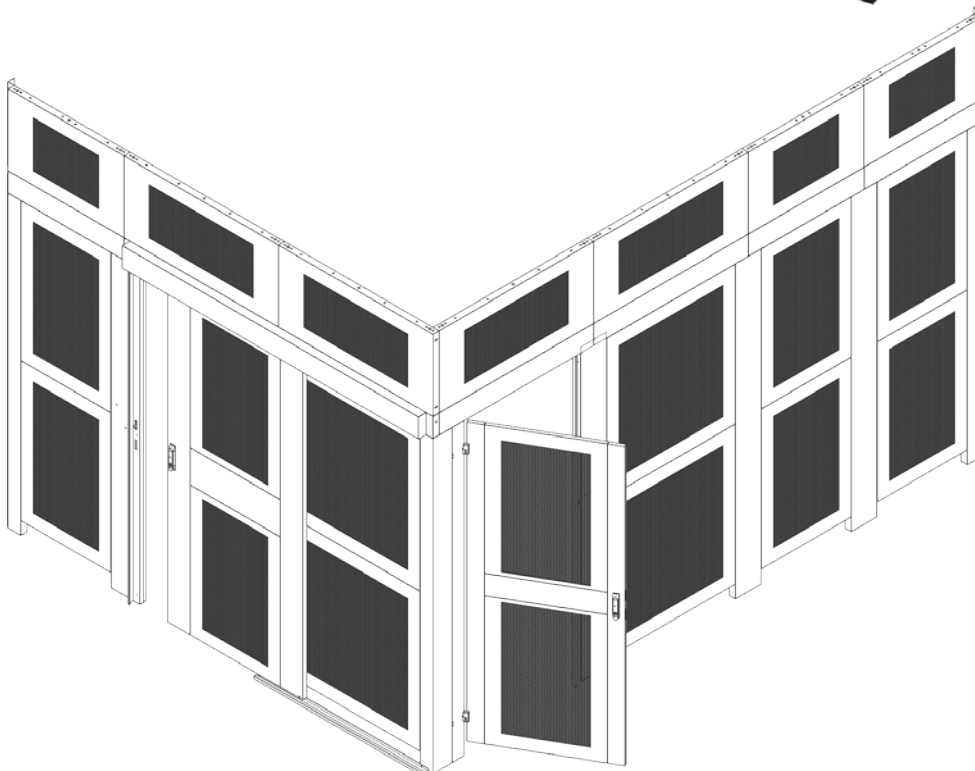
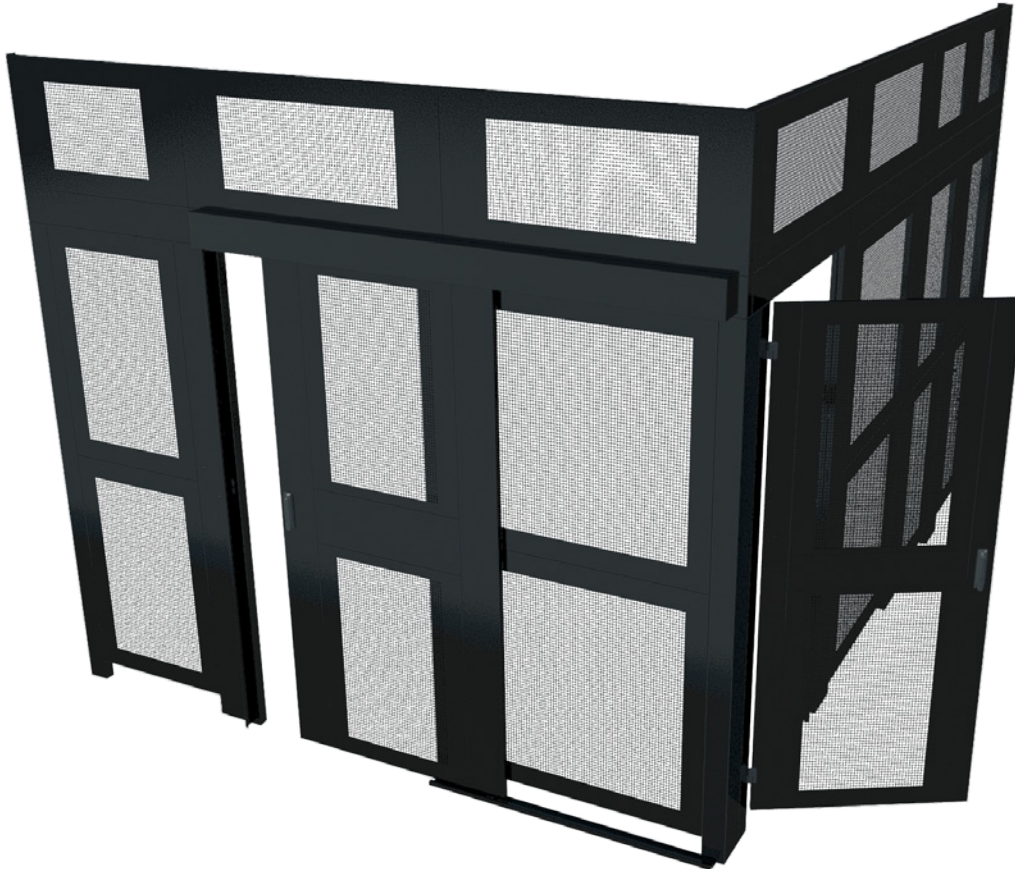
R.F. Mote Cage Wall Systems provide an additional physical layer of security for your data and information system equipment.

Ideal for use in Data Center and Colocation sites; Cages allow groupings of cabinets to be segregated with access controlled by customer or security clearance levels.

Sliding doors and swing doors available with various lock options. Choose from keyed, combination locking or electronic versions.

Manual locking doors come with an override feature inside the cage to prevent persons from being locked in.

Modular design to suit any requirement. Wall sections, including columns, are available in 3 foot (36") and 4 foot (48") widths.



### Features and Highlights

- Modular design
- Cage Walls configurable in 1 foot (12") increments
- Various heights available
- Panels perforated 3/8" square on 1/2" centers
- Swing or Sliding door options
- Doors available with various locking options:
  - keyed lock, combination lock, and electronic versions
- Provisions in top valence to accept Roof Brackets and threaded rods extended to ceiling (rods provided by customer)
- CAD layout & bill of materials provided for each project
- Heavy gauge steel construction\*\*: Valance is 14Ga. and all other parts: 16Ga.
- Durable textured black powder coat finish
- Custom sizes, material, and colours available on request

\*\* 11Ga. available upon request

Scan QR Code



for more info!

## Cage Wall Systems

Cage Wall Panel Assemblies:

ITEM	Description	81" Height	84" Height	87" Height	90" Height	93" Height	96" Height
		3"H Valances + 78"H Verticals	6" H Valances + 78"H Verticals	3"H Valances + 84"H Verticals	6" H Valances + 84"H Verticals	3"H Valances + 90"H Verticals	6" H Valances + 90"H Verticals
1	WALL BRACKET ADJ 0"-2"	RFM-CC-WB-78	RFM-CC-WB-78	RFM-CC-WB-84	RFM-CC-WB-84	RFM-CC-WB-90	RFM-CC-WB-90
2	STARTER COLUMN 4"	RFM-CC-JC-4-78	RFM-CC-JC-4-78	RFM-CC-JC-4-84	RFM-CC-JC-4-84	RFM-CC-JC-4-90	RFM-CC-JC-4-90
4	JOINER COLUMN 8"	RFM-CC-JC-8-78	RFM-CC-JC-8-78	RFM-CC-JC-8-84	RFM-CC-JC-8-84	RFM-CC-JC-8-90	RFM-CC-JC-8-90
6	CORNER POST	RFM-CC-CP-78	RFM-CC-CP-78	RFM-CC-CP-84	RFM-CC-CP-84	RFM-CC-CP-90	RFM-CC-CP-90
7	VALENCE- 3' WALL SECTION	RFM-CC-J-3-36	RFM-CC-J-6-36	RFM-CC-J-3-36	RFM-CC-J-6-36	RFM-CC-J-3-36	RFM-CC-J-6-36
5	WALL PANEL 3' WALL SECTION PERFORATED	RFM-CC-WP-2837	RFM-CC-WP-2837	RFM-CC-WP-2840	RFM-CC-WP-2840	RFM-CC-WP-2843	RFM-CC-WP-2843
8	VALENCE 4' WALL SECTION	RFM-CC-J-3-48	RFM-CC-J-6-48	RFM-CC-J-3-48	RFM-CC-J-6-48	RFM-CC-J-3-48	RFM-CC-J-6-48
3	WALL PANEL 4' WALL SECTION PERFORATED	RFM-CC-WP-4037	RFM-CC-WP-4037	RFM-CC-WP-4040	RFM-CC-WP-4040	RFM-CC-WP-4043	RFM-CC-WP-4043
9	JOINING BRACKET	RFM-CC-JB-3-36	RFM-CC-JB-36	RFM-CC-JB-3-36	RFM-CC-JB-36	RFM-CC-JB-3-36	RFM-CC-JB-36
10	ROOF BRACKET BOLT CAGE TO CEILING*	RFM-CC-ROOF-BRKT	RFM-CC-ROOF-BRKT	RFM-CC-ROOF-BRKT	RFM-CC-ROOF-BRKT	RFM-CC-ROOF-BRKT	RFM-CC-ROOF-BRKT

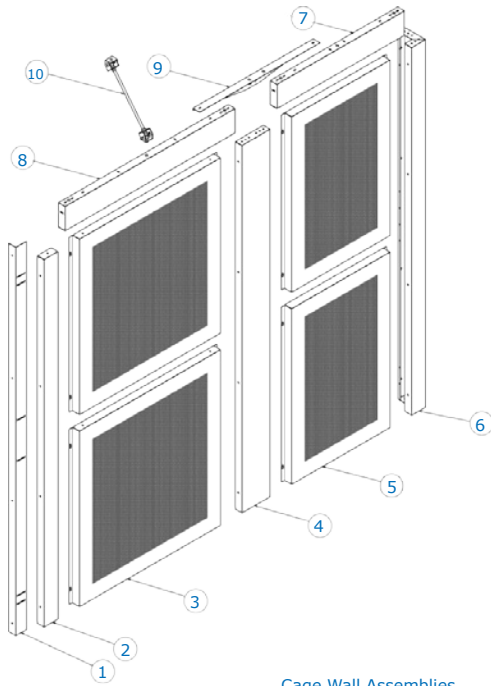
\*Note: threaded rod provided by customer

### Upper Wall Panel Assemblies 10' (Extends height by 22")

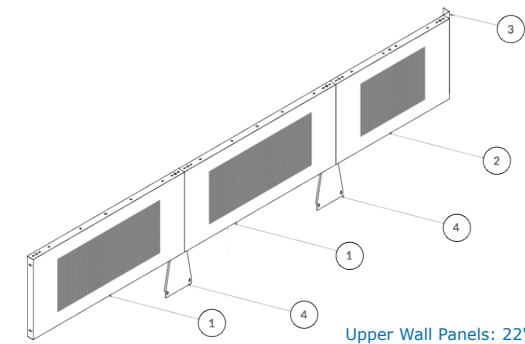
ITEM	PART NUMBER	DESCRIPTION
1	RFM-CC-TP-4822	48"W Top wall panel: 48" x 22"
2	RFM-CC-TP-3622	36"W Top wall panel: 36" x 22"
3	RFM-CC-WB-22	Wall close off bracket
4	RFM-CC-TP-STIFF	Top panel stiffener

### Upper Wall Panel Assemblies 12' (Extends height by 46")

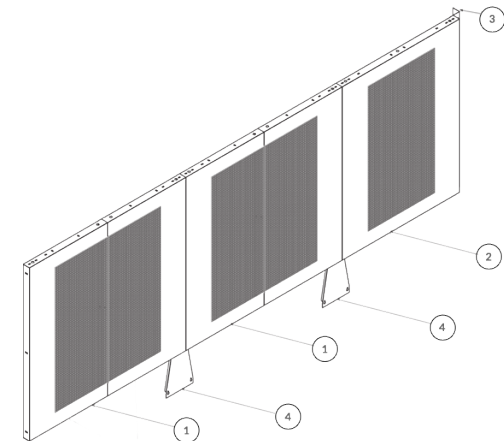
ITEM	PART NUMBER	DESCRIPTION
1	RFM-CC-TP-4846	48"W Top wall panel: 48" x 46" (2 Pcs)
2	RFM-CC-TP-3646	36"W Top wall panel: 36" x 46"
3	RFM-CC-WB-46	Wall close off bracket
4	RFM-CC-TP-STIFF	Top panel stiffener



Cage Wall Assemblies



Upper Wall Panels: 22"



Upper Wall Panels: 46"

## Cage Wall Systems

### Cage Door Assemblies - Hinged Doors

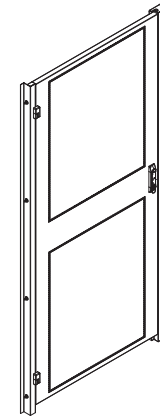
Description	81" Height	84"Height	87" Height
HINGED DOOR LH 36" DOOR OPENING	RFM-CC-HD-3678-LH-V3	RFM-CC-HD-3678-LH-V3	RFM-CC-HD-3684-LH-V3
HINGED DOOR RH 36" DOOR OPENING	RFM-CC-HD-3678-RH-V3	RFM-CC-HD-3678-RH-V3	RFM-CC-HD-3684-RH-V3

Description	90" Height	93" Height	96" Height
HINGED DOOR LH 36" DOOR OPENING	RFM-CC-HD-3684-LH-V3	RFM-CC-HD-3690-LH-V3	RFM-CC-HD-3690-LH-V3
HINGED DOOR RH 36" DOOR OPENING	RFM-CC-HD-3684-RH-V3	RFM-CC-HD-3690-RH-V3	RFM-CC-HD-3690-RH-V3

### Cage Door Assemblies - Sliding Doors

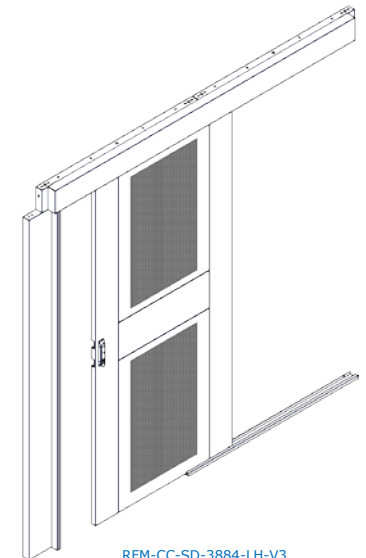
Description	81" Height	84"Height	87" Height
SLIDING DOOR ASSEMBLY (MID WALL)INCLUDES 2 VALANCES AND POSTS 38" DOOR OPENING LH	RFM-CC-SD-3878-LH-V3	RFM-CC-SD-3878-LH-V3	RFM-CC-SD-3884-LH-V3
SLIDING DOOR ASSEMBLY(CORNER) INCLUDES 1 POST AND 1 CORNER 38" DOOR OPENING LH	RFM-CC-SD-3878-LH-V3-CORNER	RFM-CC-SD-3878-LH-V3-CORNER	RFM-CC-SD-3884-LH-V3-CORNER
SLIDING DOOR ASSEMBLY (END WALL)INCLUDES 2 VALANCES AND POSTS 36" DOOR OPENING LH	RFM-CC-SD-3878-LH-V3-END	RFM-CC-SD-3878-LH-V3-END	RFM-CC-SD-3884-LH-V3-END
SLIDING DOOR ASSEMBLY (MID WALL)INCLUDES 2 VALANCES AND POSTS 38" DOOR OPENING RH	RFM-CC-SD-3878-RH-V3	RFM-CC-SD-3878-RH-V3	RFM-CC-SD-3884-RH-V3
SLIDING DOOR ASSEMBLY(CORNER) INCLUDES 1 POST AND 1 CORNER 38" DOOR OPENING RH	RFM-CC-SD-3878-RH-V3-CORNER	RFM-CC-SD-3878-RH-V3-CORNER	RFM-CC-SD-3884-RH-V3-CORNER
SLIDING DOOR ASSEMBLY (END WALL)INCLUDES 2 VALANCES AND POSTS 36" DOOR OPENING RH	RFM-CC-SD-3878-RH-V3-END	RFM-CC-SD-3878-RH-V3-END	RFM-CC-SD-3884-RH-V3-END

Description	90" Height	93" Height	96" Height
SLIDING DOOR ASSEMBLY (MID WALL)INCLUDES 2 VALANCES AND POSTS 38" DOOR OPENING LH	RFM-CC-SD-3884-LH-V3	RFM-CC-SD-3890-LH-V3	RFM-CC-SD-3890-LH-V3
SLIDING DOOR ASSEMBLY(CORNER) INCLUDES 1 POST AND 1 CORNER 38" DOOR OPENING LH	RFM-CC-SD-3884-LH-V3-CORNER	RFM-CC-SD-3890-LH-V3-CORNER	RFM-CC-SD-3890-LH-V3-CORNER
SLIDING DOOR ASSEMBLY (END WALL)INCLUDES 2 VALANCES AND POSTS 36" DOOR OPENING LH	RFM-CC-SD-3884-LH-V3-END	RFM-CC-SD-3890-LH-V3-END	RFM-CC-SD-3890-LH-V3-END
SLIDING DOOR ASSEMBLY (MID WALL)INCLUDES 2 VALANCES AND POSTS 38" DOOR OPENING RH	RFM-CC-SD-3884-RH-V3	RFM-CC-SD-3890-RH-V3	RFM-CC-SD-3890-RH-V3
SLIDING DOOR ASSEMBLY(CORNER) INCLUDES 1 POST AND 1 CORNER 38" DOOR OPENING RH	RFM-CC-SD-3884-RH-V3-CORNER	RFM-CC-SD-3890-RH-V3-CORNER	RFM-CC-SD-3890-RH-V3-CORNER
SLIDING DOOR ASSEMBLY (END WALL)INCLUDES 2 VALANCES AND POSTS 36" DOOR OPENING RH	RFM-CC-SD-3884-RH-V3-END	RFM-CC-SD-3890-RH-V3-END	RFM-CC-SD-3890-RH-V3-END



RFM-CC-HD-3690-LH-V3

Note: Hinged doors fit any 4' wall section columns, corners and valence separate order



RFM-CC-SD-3884-LH-V3

Note: Sliding doors req 2 x 4' wall sections ,assemblies vary for lh or rh and if installed end of wall, mid wall or corner.

### Door Handles and Right-hand Hinges:

Description	Part Number
<ul style="list-style-type: none"> <li>COMBINATION LOCKING SWING HANDLE</li> <li>RETROFITTABLE</li> </ul>	RFM-COMBOLOCK
<ul style="list-style-type: none"> <li>ELECTRONIC LOCKING SWING HANDLE</li> <li>RETROFITTABLE</li> </ul>	RFM-E-LOCK-SH
<ul style="list-style-type: none"> <li>RIGHT HAND HINGE SET (for hinged door assembly)</li> </ul>	RFM-RH-HINGE

## RFM-CC-CSD Series Stand Alone Sliding Cage Doors & RFM-CC-CHD Series Single Hinged Cage Doors

R.F.Mote introduces Cage Doors - for limited space installations. RFM-CC-CSD Series Sliding Cage Doors & RFM-CC-CHD Single Hinged Cage Doors attach directly to the cabinet(s) and provides an additional layer of security while the slim design maintains a minimal addition to existing cabinet footprint.



### RFM-CC-CSD Series Sliding Cage Doors

#### Features and Highlights

- Stand Alone Unit mounts to Cabinet tops and room floor
- Slim design
- Panels perforated 3/8" (9.525 mm) square
- Extends overall cabinet footprint depth by 7.0" (177.8 mm)
- Sliding doors available in dual and triple versions
- Multiple locking options - Key Lock, Padlock Hasp, Combination Lock, Electronic Lock
- Available in widths and heights to suit any R.F.Mote Cabinet
- Customizable solutions for 3rd party cabinets
- Heavy gauge steel construction
- Durable textured black powder coat finish
- Custom colours also available (e.g. RAL7035)

Scan QR Code



for more info!



### RFM-CC-CHD Series Single Hinged Cage Doors

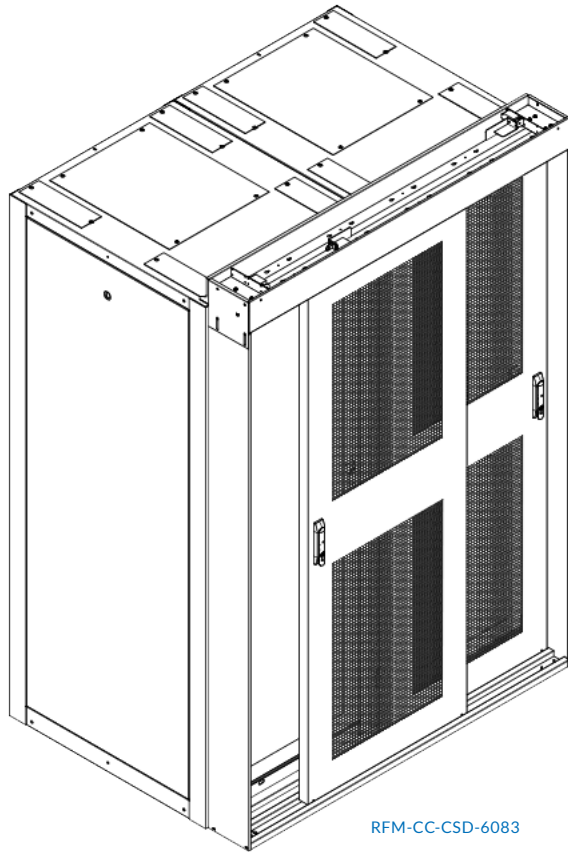
#### Features and Highlights

- Stand Alone Unit mounts to Cabinet tops and room floor
- Slim design
- Panels perforated 3/8" (9.525 mm) square
- Extends overall cabinet footprint depth by 2.50" (63.5 mm)
- Field reversible, Swing\* doors
- Hinged doors available as single stand alone unit.
- For multiple cabinet installations, Individual units can be ganged together
- Multiple locking options - Key Lock, Padlock Hasp, Combination Lock, Electronic Lock
- Available in widths and heights to suit any R.F.Mote Cabinet
- Customizable solutions for 3rd party cabinets
- Heavy gauge steel construction
- Durable textured black powder coat finish
- Custom colours also available (e.g. RAL7035)

\* Right Hand Hinge Kit may be required

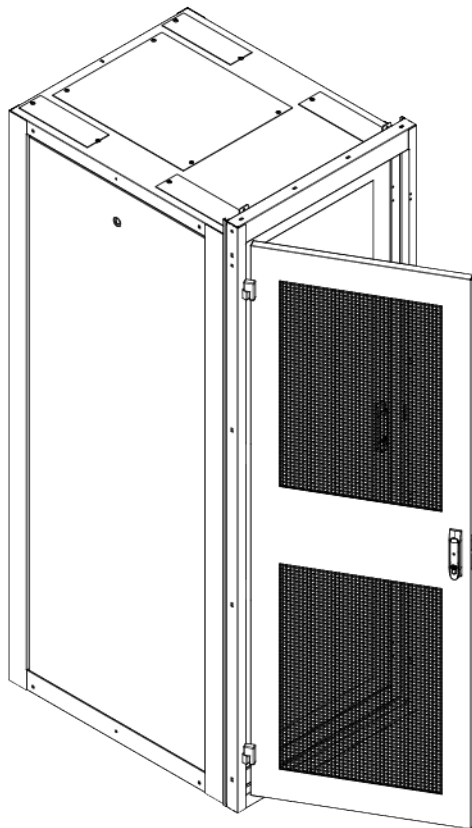
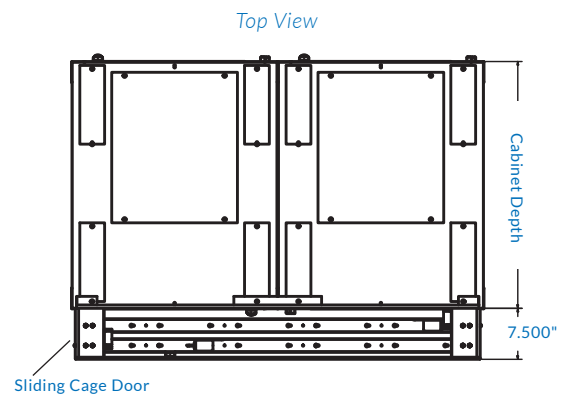


## RFM-CC-CSD Series Stand Alone Sliding Cage Doors & RFM-CC-CHD Series Single Hinged Cage Doors



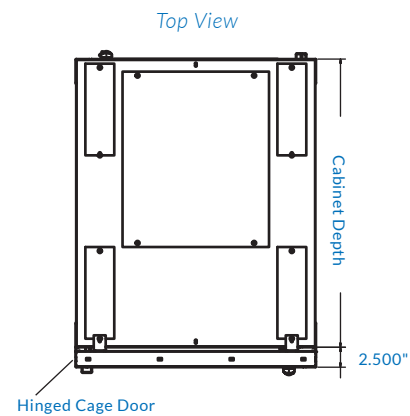
### RFM-CC-CSD Series: Sliding Cage Door

Part number	Description
RFM-CC-CSD-6083	2 Sliding Doors, Fits 2x 83"Hx30"W RFM Cabinets
RFM-CC-CSD-4883	2 Sliding Doors, Fits 2x 83"Hx24"W RFM Cabinets
RFM-CC-CSD-6090	2 Sliding Doors, Fits 2x 90"Hx30"W RFM Cabinets
RFM-CC-CSD-4890	2 Sliding Doors, Fits 2x 90"Hx24"W RFM Cabinets
RFM-CC-CSD-9083	3 Sliding Doors, Fits 3x 83"Hx30"W RFM Cabinets
RFM-CC-CSD-7283	3 Sliding Doors, Fits 3x 83"Hx24"W RFM Cabinets
RFM-CC-CSD-9090	3 Sliding Doors, Fits 3x 90"Hx30"W RFM Cabinets
RFM-CC-CSD-7290	3 Sliding Doors, Fits 3x 90"Hx24"W RFM Cabinets



### RFM-CC-CHD Series : Hinged Cage Door

Part number	Description
RFM-CC-CHD-3083	1 Hinged Door, Fits 1x 83"Hx30"W RFM Cabinet
RFM-CC-CHD-2483	1 Hinged Door, Fits 1x 83"Hx24"W RFM Cabinet
RFM-CC-CHD-3090	1 Hinged Door, Fits 1x 90"Hx30"W RFM Cabinet
RFM-CC-CHD-2490	1 Hinged Door, Fits 1x 90"Hx24"W RFM Cabinet



### Optional Locks and Right-Hand Hinge Kit

Part number	Description
RFM-COMBOLOCK	Combination locking swing handle
RFM-E-LOCK-SH	Electronic locking swing handle (for Hinged Door)
RFM-E-LOCK-SD	Electronic locking swing handle (for Sliding Door)
RFM-RH-HINGE	Right hand hinge set (for Hinged Door assembly)



## Aisle Containment

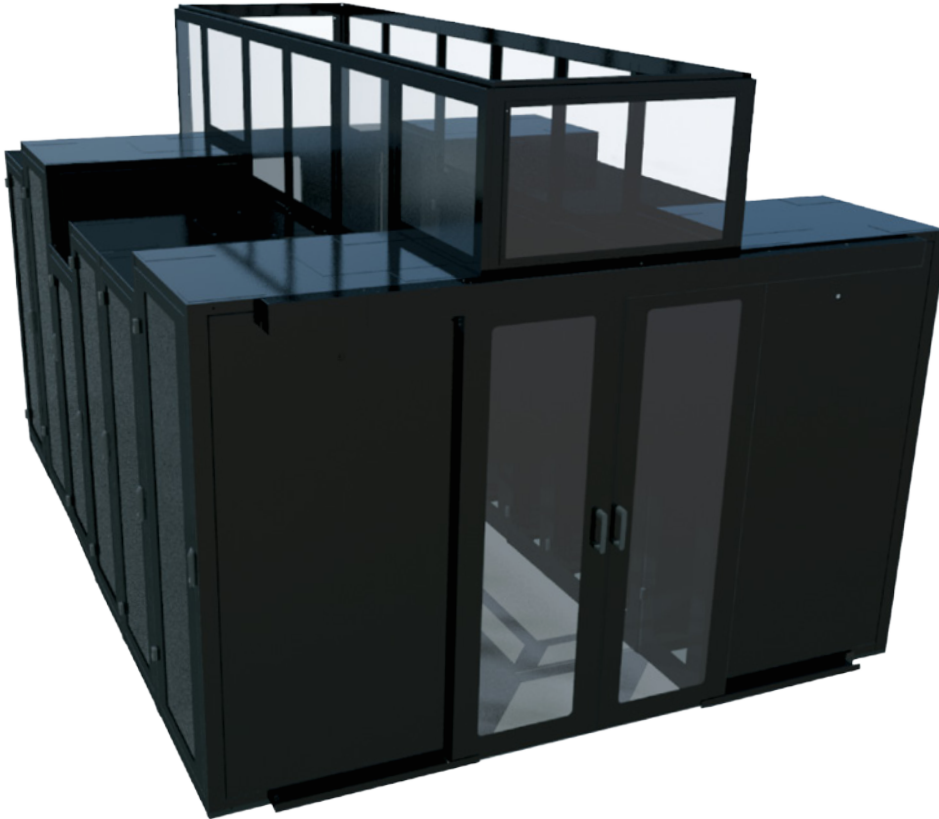
R.F. Mote has a built a reputation for solving complex problems with both standard and customized products. Our Aisle Containment Solutions are designed to personalize virtually any containment strategy.

### Hot Aisle Containment (HAC)

R.F.Mote Hot Aisle Containment (HAC) Solutions - Hot air exhaust from IT equipment is isolated in the hot aisle and directed back to the CRAC/CRAH.

### Cold Aisle Containment (CAC)

R.F.Mote Cold Aisle Containment (CAC) Solutions - Targets cooling installed IT equipment instead of the room by isolating the cold air supply and confining it to an enclosed area.



#### Standard Features:

- Contain Hot or Cold aisle
- Prevent air mixing
- Block air escape routes
- Improve energy usage efficiency
- Fits ANY RFM Series Cabinets as well as RFM Series Fortress cabinets
- Modular design for future expansion
- Customizable solution for 3rd party cabinets
- Standard colour is *textured black powdercoat*
- Custom colours (e.g. RAL 7035) also available

#### Cabinet To Ceiling Panels:

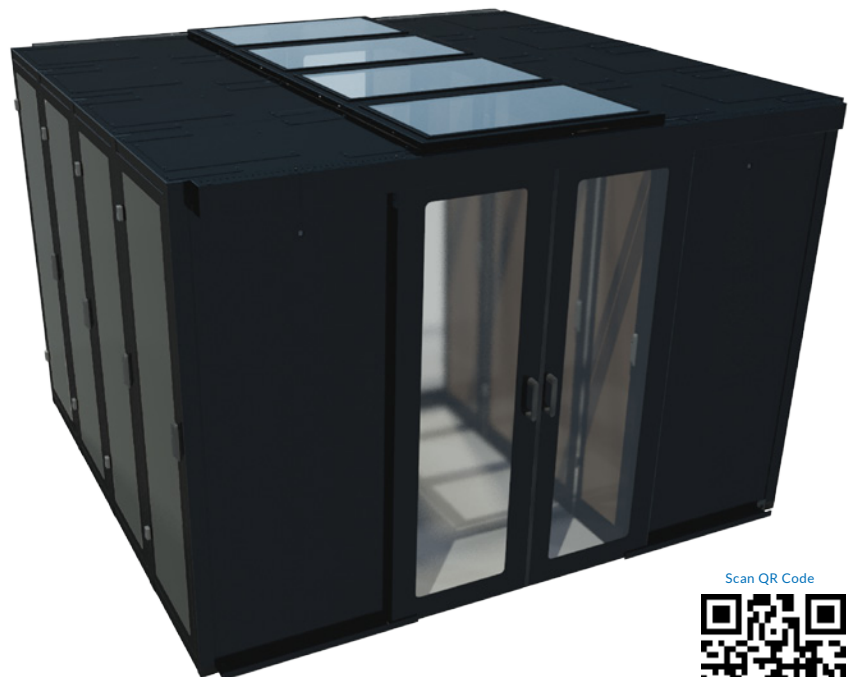
- Available with solid steel panels or
- Available steel frame with clear inserts<sup>1</sup>
- Containment panels enclose the area above cabinets and span from top of cabinet to ceiling
- Standard colour is *textured black powdercoat*
- Custom colours (e.g. RAL 7035) also available

#### End of Row Doors:

- Available Sliding, Dual Sliding, or Swing Door
- Doors are available manual or self closing
- Doors c/w clear inserts<sup>1</sup>
- Standard colour is *textured black powdercoat*
- Custom colours (e.g. RAL 7035) also available

#### Over Aisle Ceiling Panels:

- Contain aisle by enclosing space between cabinet rows
- Over Aisle Ceiling panels may be equipped with exhaust ducts, openings for fire suppression systems, or HVAC
- Available steel frame with clear inserts<sup>1</sup>
- Standard colour is *textured black powdercoat*
- Custom colours (e.g. RAL 7035) also available



<sup>1</sup> clear inserts are UL 94 Fire Rated

Scan QR Code



for more info!

## RFM Custom Products

R. F. Mote custom fabricated products are crafted from a wide variety of materials including steel, stainless steel, aluminum, copper and brass with an extensive variety of painted or plated finishes. Below, a sampling of large and small enclosures, face plates, kiosks, and chassis



Our commitment extends beyond simply building precision parts and assemblies;  
We believe that when you strive for the best in your product you deserve the best in ours.

### PRODUCTS WE MANUFACTURE:

- ***Cabinets and Racks***
- ***Custom Metal Fabrication***
- ***Cage Containment***
- ***Hot and Cold Aisle Containment***
- ***Work Benches***
- ***Custom Enclosures***

**R. F. MOTE LTD.**  
214 Newkirk Road  
Richmond Hill, Ontario  
L4C 3G7

Phone: 1-905-884-5250  
Fax: 1-905-737-5188  
Net: www.rfmote.com  
Email: info@rfmote.com