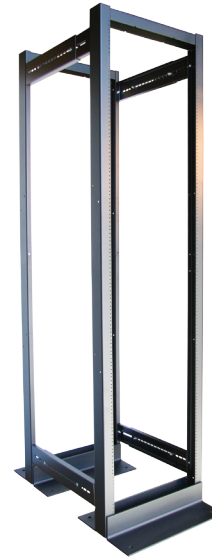
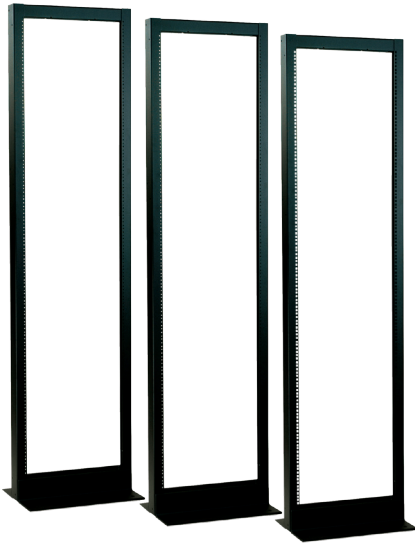


RFM Series Racks and Accessories

R. F. Mote Relay Racks are manufactured from 11ga. steel, are fully welded, and units can easily be ganged together, with or without cable managers. Racks are tapped #10-32 to standard EIA spacing; Cage-nut style is also available.



Four Post Rack Bracket Kit

Part number	Adj. Depth
RFM-FPRK	25.50" ~ 42.00"

The assembled unit consists of 2 single racks (RFM-1944-RB) and a bracket kit (RFM-FPRK) which joins the racks together.

Single racks (RFM-1944-RB) are not included, and must be purchased as a separate item.

Standard Features Include:

- Heavy gauge steel, fully welded construction
- 11 gauge steel frame
- Structural steel floor angles, 5/16" thick, c/w holes to bolt to floor
- Various heights available: 48U / 44U / 38U / 24U
- Stamped 'U' markings
- 19", 23" and 24" mounting available
- Load capacity : 2000 lbs
- c/w 1 integrated ground stud 1/4-20 thread x 3/4" length
- c/w (2x) 0.750" DIA holes in top

Standard Features Include:

- Four Post Rack Assemblies provide the stability of a cabinet while maintaining the accessibility of an open frame rack
- These units are made up of two R.F. Mote Racks, purchased separately, and an adjustable bracket kit, RFM-FPRK, which joins the racks together.
- The Four Post Rack is depth adjustable from 25^{1/2}" to 42" Rail to Rail.

Tapped #10-32

Part number	H	W	D	Mount	# of U's
RFM-1948-RB	90.00"	21.50"	15.00"	19" EIA	48U
RFM-1944-RB	83.00"	21.50"	15.00"	19" EIA	44U
RFM-1938-RB	72.50"	21.50"	15.00"	19" EIA	38U
RFM-1924-RB	48.00"	21.50"	15.00"	19" EIA	24U
RFM-2348-RB	90.00"	25.50"	15.00"	23" EIA	48U
RFM-2344-RB	83.00"	25.50"	15.00"	23" EIA	44U
RFM-2338-RB	72.50"	25.50"	15.00"	23" EIA	38U
RFM-2324-RB	48.00"	25.50"	15.00"	23" EIA	24U

Cage nut style

Part number	H	W	D	Mount	# of U's
RFM-1948-RB-SQ	90.00"	21.50"	15.00"	19" EIA	48U
RFM-1944-RB-SQ	83.00"	21.50"	15.00"	19" EIA	44U
RFM-1938-RB-SQ	72.50"	21.50"	15.00"	19" EIA	38U
RFM-1924-RB-SQ	48.00"	21.50"	15.00"	19" EIA	24U

Hardware package included (qty 24 cage-nuts and screws)

Tapped both sides

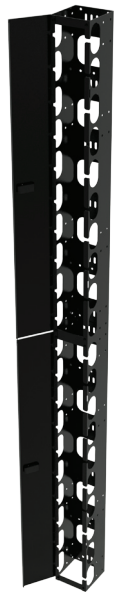
Part number	H	W	D	Mount	# of U's
RFM-1948-RB-TBS	90.00"	21.50"	15.00"	19" EIA	48U
RFM-1944-RB-TBS	83.00"	21.50"	15.00"	19" EIA	44U
RFM-2344-RB-TBS	83.00"	25.50"	15.00"	23" EIA	44U

Both front and back of rack tapped #10-32



RFM Series Racks and Accessories

Common Options



Rack Vertical cable manager: wide, various heights

Fits with...	Part number	H	W	D
24U Racks	RFM-RVCM-B-48	48.00"	5.15"	5.43"
38U Racks	RFM-RVCM-B-72	72.00"	5.15"	5.43"
44U Racks	RFM-RVCM-B	82.50"	5.15"	5.43"
44U Racks	RFM-RVCMG-B	82.50"	8.15"	5.43"
44U Racks	RFM-RVCM-B-10	82.50"	10.00"	5.43"
44U Racks	RFM-RVCM-B-12	82.50"	12.00"	5.43"
48U Racks	RFM-RVCM8-48	89.50"	8.00"	5.43"
48U Racks	RFM-RVCM10-48	89.50"	10.00"	5.43"

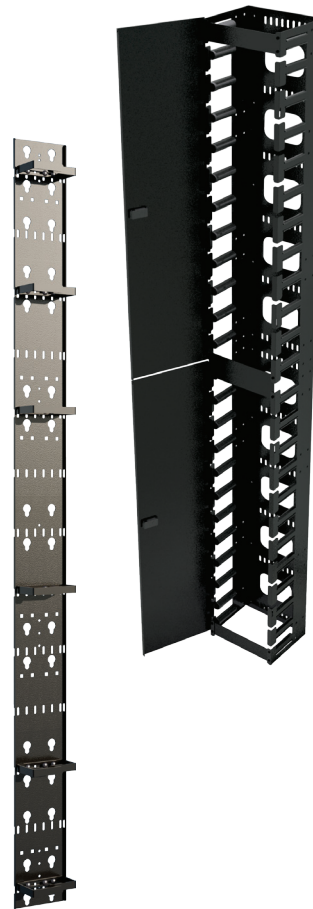
Wall mount rack vertical cable manager, 18U height

Fits with...	Part number	H	W	D
18U Racks (wall mount)	RFM-RVCM-B-RWF	35.00"	5.15"	5.43"

High Density Vertical Cable Trough

Part number	Part description
RFM-683-VCT-HD	VCT-High Density*
RFM-DR-ADJ	Install on VCT-HD

* Fits all RFM Series 83"H Cabinets



HIGH DENSITY CABLE MANAGEMENT

RFM-RVCM-HD series: 2U finger spacing

Part number	A	# of U's
RFM-RVCM-HD8-48	8.00	48U
RFM-RVCM-HD10-48	10.00	48U
RFM-RVCM-HD8	8.00	44U
RFM-RVCM-HD10	10.00	44U
RFM-RVCM-HD8-72	8.00	38U
RFM-RVCM-HD10-72	10.00	38U

RFM-RVCM-HD series: 2U finger spacing
c/w D-Rings on rear of VCM

Part number	A	# of U's
RFM-RVCM-HD8-DR-48	8.00	48U
RFM-RVCM-HD10-DR-48	10.00	48U
RFM-RVCM-HD8-DR	8.00	44U
RFM-RVCM-HD10-DR	10.00	44U
RFM-RVCM-HD8-DR-72	8.00	38U
RFM-RVCM-HD10-DR-72	10.00	38U

RFM-RVCM-HD series: 2U finger spacing
c/w Double Sided cable management

Part number	A	B	# of U's
RFM-RVCM-HD8-DS-48	8.00	7.00	48U
RFM-RVCM-HD10-DS-48	10.00	9.00	48U
RFM-RVCM-HD8-DS	8.00	7.00	44U
RFM-RVCM-HD10-DS	10.00	9.00	44U
RFM-RVCM-HD8-DS-72	8.00	7.00	38U
RFM-RVCM-HD10-DS-72	10.00	9.00	38U

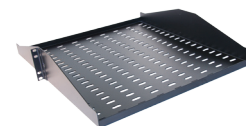
RFM-RVCM-HD series: End Panel
for Double Sided cable manager

Part number	Fits Double Sided RVCM...
RFM-RVCM-HD-48-EP	RFM-RVCM-HDxx-DS-48
RFM-RVCM-HD-EP	RFM-RVCM-HDxx-DS
RFM-RVCM-HD-72-EP	RFM-RVCM-HD-xx-DS-72



Shelf - fixed series
100LB capacity

Part number	Depth	Spacing
RFM-1921-RFS	21"	2U
RFM-1915-RFS	15"	2U
RFM-1912-RFS	12"	2U
RFM-1909-RFS	9"	2U



Part number	Depth	Spacing
RFM-1920-DRFS	20"	2U
RFM-1928-DRFS	28"	2U



Shelf - retractable series
100LB capacity

Part number	Depth	Spacing
RFM-1920-RRS	20"	2U

Adj. Mount Depth - Fixed Position
(Use with Four-Post Rack)

Part number	Shelf depth	Overall adjustable mounting depth	Spacing
RFM-1726-CFS-4	26.00"	6.00" ~ 33.475"	1U
RFM-1719-CFS-4	19.00"	6.00" ~ 26.625"	1U
RFM-1716-CFS-4 (note: non-vented)	16.00"	6.00" ~ 23.625"	1U
RFM-2440-CFS-4		23.75" ~ 45.50"	1U

Adj. mount depth - Retractable

Part number	Shelf depth	Overall adjustable mounting depth	Spacing
RFM-1726-CRS-4-1U	26.00"	13.00" ~ 33.35"	1U

Additional Options



Horizontal Cable Management

Part number	Spacing
RFM-191D-HCM	1U
RFM-192D-HCM-TD	2U
RFM-194D-HCM-TD	4U
RFM-191D-HCM-D	1U
RFM-192D-HCM-D	2U
RFM-195D-HCM-D	5U
RFM-191D-HCM-F	1U
RFM-192D-HCM-F	2U
RFM-191D-HCM-FD	1U
RFM-192D-HCM-FD	2U
RFM-194D-HCM-FD	4U
RFM-192D-HCM-FHD	2U

Grounding Bar - Horizontal & Vertical

Part number	Copper Bar
RFM-HGB-19	1" w x 3/16" Thick - Horiz.
RFM-GB-83	1" w x 3/16" Thick - Vert.
RFM-GB-72	1" w x 3/16" Thick - Vert.
RFM-GB-59	1" w x 3/16" Thick - Vert.
RFM-GB-35	1" w x 3/16" Thick - Vert.



Power Bars - Horizontal & Vertical

Part number	Mnt.	Rated
RFM-19-PBH-8	Horz	15A
RFM-19-PBHT	Horz	15A
RFM-19-PBH-20A	Horz	20A
RFM-19-PBHT-20A	Horz	20A
RFM-48-PBV-18	Vert	15A
RFM-62-PBV-24	Vert	15A
RFM-62-PBV-20A-24	Vert	20A



Jumper Kit - Grounding Kit

Part number	Cable
RFM-JK-60	6Awg, 60'L
RFM-GRD-KIT	10Awg, 16'L